



Green Lane, Farnham, GU9 8PU Spacious Detached House Family House – 4 Bedrooms

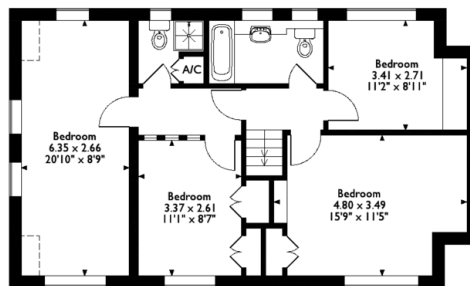
Rent: £2,250 pcm

Double gates to driveway with plenty of parking; single garage; entrance lobby leading to sitting room; separate dining room; kitchen/breakfast room with appliances including range cooker, fridge/freezer, dishwasher, French doors leading to the patio and terraced garden beyond; utility room/cloakroom with washing machine; four double bedrooms; large family bathroom with shower over bath; separate shower room; fabulous family home with wooden flooring throughout; walking distance to excellent local schools

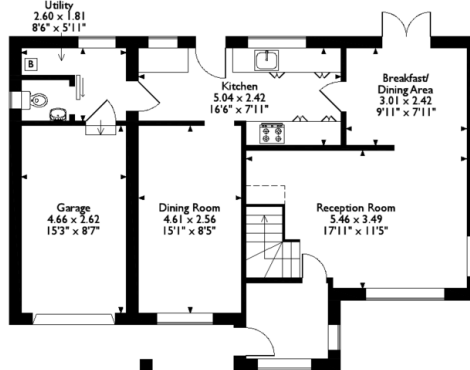
Next Available: Mid June 2020



Approximate Gross Internal Area
Main House = 127 Sq M/1369 Sq Ft
Garage = 12 Sq M/131 Sq Ft



First Floor



Ground Floor

Please note that the location of doors, windows and other items are approximate and this floorplan is to be used for illustrative purposes only. Unauthorized reproduction is prohibited.

Directions: From our offices proceed to the top of Firgrove Hill at the traffic lights turn right into Ridgway Road leading to Shortheath Road, at the mini roundabout turn right into Green Lane the property can be found a short way along on the right.

Council Tax Band: F

Contact Details

5 Borelli Yard

Farnham

Surrey

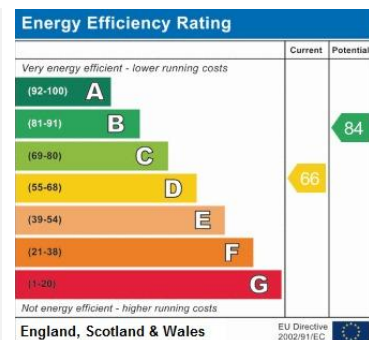
GU9 7NU

www.southernproperties.info

lettings@southernproperties.info

01252 724438

* For more information about our fees on renting this property and how they are calculated please refer to our Tenants Terms and Conditions which can be found at www.southernproperties.info or call us on 01252 724438.



Agents Note: Whilst every care has been taken to prepare these sales particulars, they are for guidance purposes only. All measurements are approximate and for general guidance purposes only and whilst every care has been taken to ensure their accuracy, they should not be relied upon and potential buyers are advised to recheck the measurements.