



Milton Road, Wimbledon SW19

Guide Price: £850,000 (Freehold) No Onward Chain

3 2 2

- Extended
- Three bedrooms
- EPC EER E

- Family home
- Terraced
- Close to transport



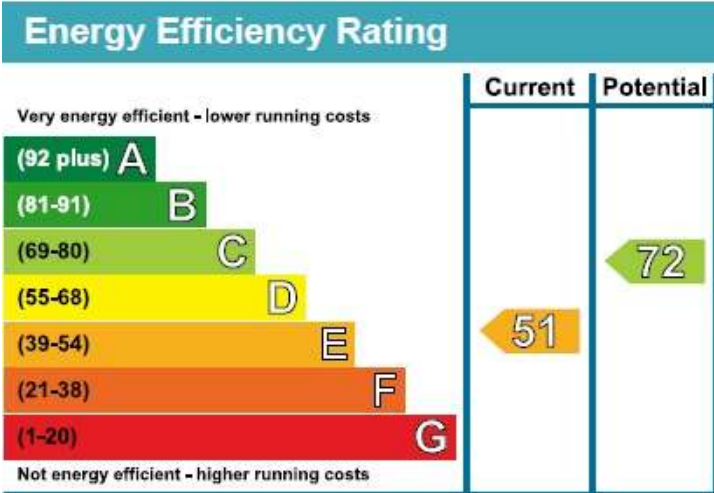
### Property Details

A stunning and well presented, three double bedroom, Victorian family home with a South-facing garden located in the sought-after Poets area of Wimbledon being close to Garfield School and within easy reach of Wimbledon Mainline, Thameslink and Northern Line Stations. On the ground floor is a double length front reception room with feature fireplace, w/c and a high specification open-planned kitchen/breakfast/dining area with bi-fold doors that open onto the sunny landscaped garden. Upstairs you will find two large double bedrooms, a fantastic modern family bathroom and stairs that lead up to the converted loft with a master and an en-suite.



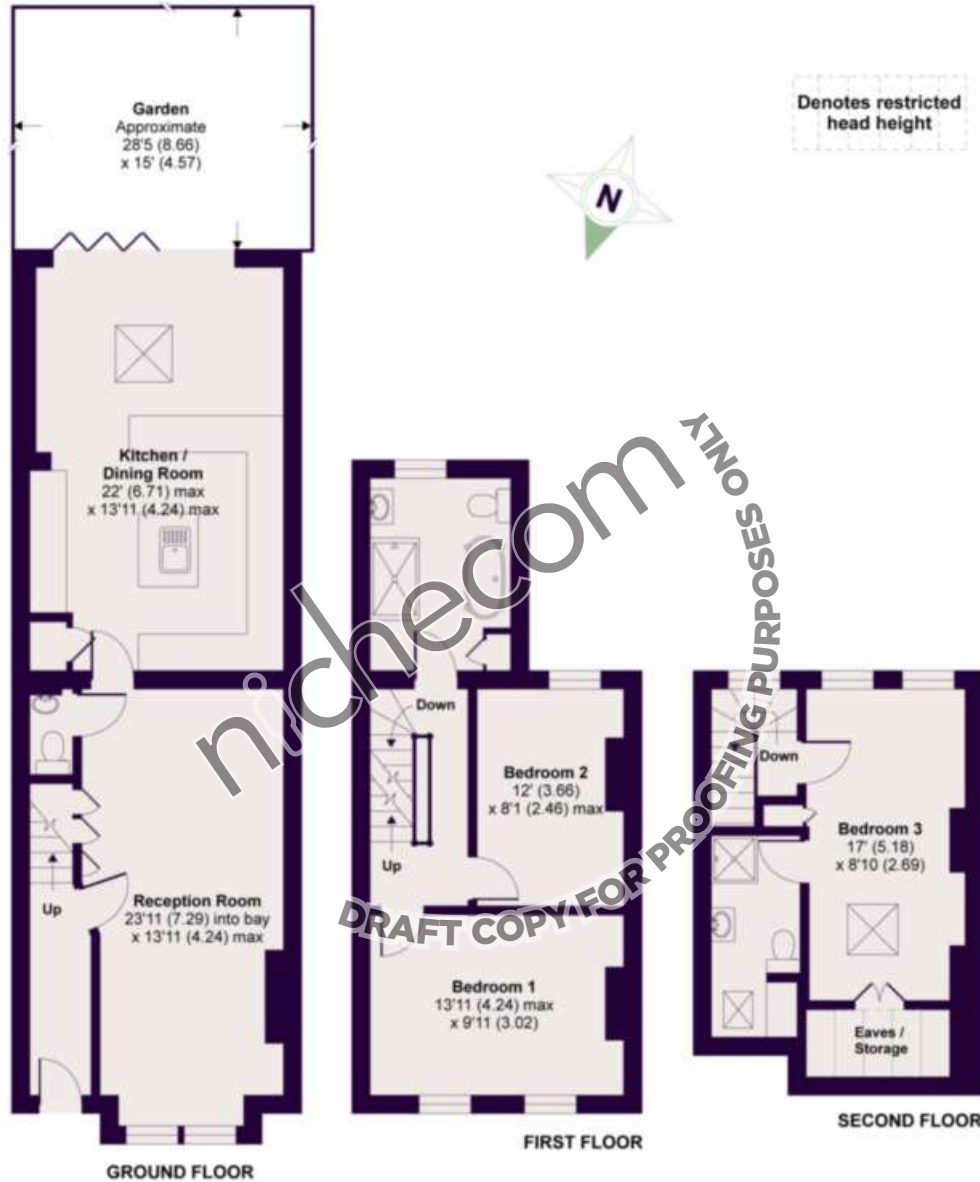
nichecom

DRAFT COPY FOR PROOFING PURPOSES ONLY



## Milton Road, Wimbledon, London, SW19

APPROX. GROSS INTERNAL FLOOR AREA 1268 SQ FT 117.7 SQ METRES  
(EXCLUDES RESTRICTED HEAD HEIGHT)



Whilst every attempt has been made to ensure the accuracy of the floor plan contained here, measurements of doors, windows and rooms are approximate and no responsibility is taken for any error, omission or misstatement. These plans are for representation purposes only as defined by RICS Code of Measuring Practice and should be used as such by any prospective purchaser. Specifically no guarantee is given on the total square footage of the property if quoted on this plan. Any figure given is for initial guidance only and should not be relied on as a basis of valuation.

Copyright nichecom.co.uk 2020 Produced for Lauristons REF : 567334

If you have just started looking or have found your new home, you could benefit from talking to our Financial Services Department. For an informal discussion on anything from costs of moving to the most current mortgage rates please call us on 020 8946 9468. Your home is at risk if you do not keep up with repayments on a mortgage or any other loan secured on it. Written quotations available on request. Viewing is strictly through the owners Lauristons. Wimbledon Office 53 Wimbledon Hill Road, London SW19 7QW Tel: 020 8946 9468 Fax: 020 8946 9465 Email: sales.wimbledon@lauristons.com. For clarification we wish to inform potential purchasers that we prepared these particulars as a general guide. We have not carried out a detailed survey, nor tested the services, appliances and specific fittings. Lease details, where applicable, must be confirmed by your solicitor, Carpets, curtains, gas fires, electrical goods / fittings or other fixtures, unless expressly mentioned, are not included in the sales of this property. If there are any important matters which are unlikely to affect your decision to buy please contact this office and we will be pleased to check the information for you before viewing the property. Before this property can be removed from the market, all offers must be checked by Lauristons Financial Adviser. This is a service we offer on behalf of our clients. Please note that our room sizes are quoted in meters to the nearest tenth of a meter on wall to wall basis. The imperial equivalent is only intended as an approximate guide for those not fully conversant with the metric measurements. All measurements have been taken using a sonic tape measure and therefore may be subject to a small margin error.

We may refer you to recommended providers of ancillary services such as Conveyancing, Financial Services, Insurance and Surveying. We may receive a commission payment fee or other benefit (known as a referral fee) for recommending their services. You are not under any obligation to use the services of the recommended provider. The ancillary service provider may be an associated company of Lauristons Ltd.