

ROKSTONE



Chiltern Street, Marylebone W1U

This rarely available, bright, spacious and very well proportioned two bedroom flat is situated on the fifth floor (with a lift) of this popular Mansion Block in the heart of Marylebone.

The flat comprises a large double aspect reception/dining room, two generous double bedrooms, two bathrooms (one en-suite), a modern separate kitchen and plenty of storage throughout.

Portman mansions is a very well maintained prime Marylebone period building benefiting from a full time porter, private gym and sauna.

Ideally located moments from the boutique shops of Marylebone High Street, Chiltern Street has become one of London's trendiest streets with its village ambiance and the ever popular Chiltern Firehouse Hotel located on the same street. The nearest tube station is Baker Street which is also just moments away from the property.

This property would make the perfect Marylebone home or pied-a-terre.

Price £850 pw

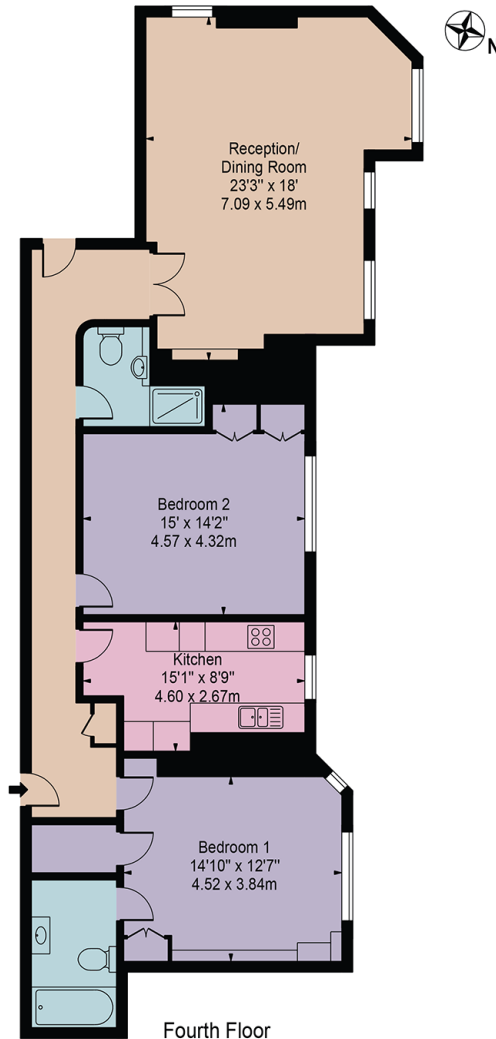


Olivia McSweeney | Head of Lettings
D: 020 3219 5679 | M: 07584633058 | E: olivia@rokstone.com
5 Dorset Street, London, W1U 6QJ

ROKSTONE

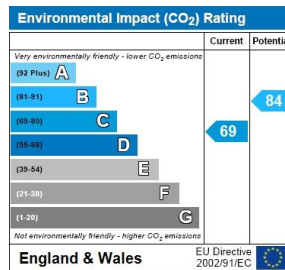
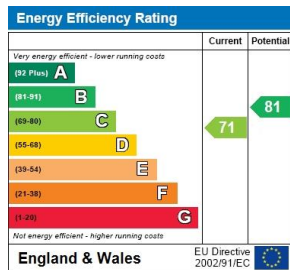
Portman Mansions

Approx. Gross Internal Area 1220 Sq Ft - 113.34 Sq M



For Illustration Purposes Only - Not To Scale

This floor plan should be used as a general outline for guidance only and does not constitute in whole or in part an offer or contract. Any intending purchaser or lessee should satisfy themselves by inspection, searches, enquiries and full survey as to the correctness of each statement. Any areas, measurements or distances quoted are approximate and should not be used to value a property or be the basis of any sale or let.



Olivia McSweeney | Head of Lettings
 D: 020 3219 5679 | M: 07584633058 | E: olivia@rokstone.com
 5 Dorset Street, London, W1U 6QJ