

FLETCHERS

ESTATE AGENTS



Brooks Road, W4

£850,000

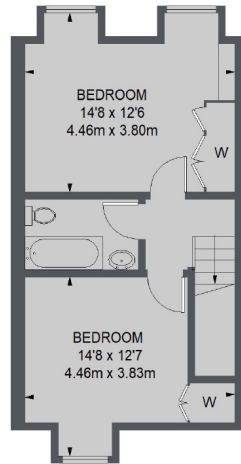
A well presented three double bedroom modern home with an 18' reception and a kitchen/breakfast room. There is an integral garage and to the rear of the property is a 45' garden. The property also benefits from no onward chain.

Brooks Road is a residential road off Wellesley Road and within 200 metres of Gunnersbury underground and Kew Bridge Station. Situated very close to Strand on the Green School and the excellent bars and restaurants by the River Thames.

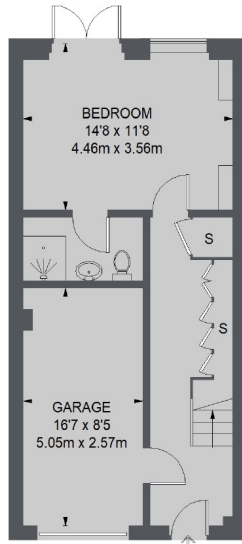
- Three Bedrooms • Kitchen/Breakfast Room • 45 Ft. Garden • Integral Garage • Off Street Parking • No Onward Chain •

FLETCHERS

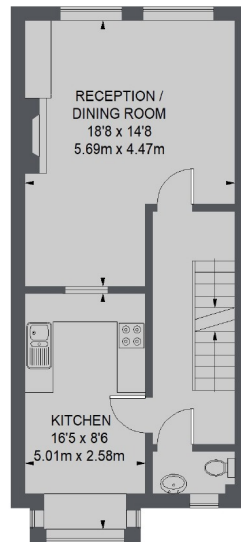
ESTATE AGENTS



SECOND FLOOR



GROUND FLOOR



FIRST FLOOR

TOTAL APPROX. FLOOR AREA (INCLUDING GARAGE)
1395 SQ. FT. (129.63 SQ. M.)

Fletchers Chiswick Turnham Green
Sales
58 Turnham Green Terrace, London, W4
1QP
020 8987 3000

Energy Rating: C. We aim to make our particulars both accurate and reliable. However they are not guaranteed; nor do they form part of an offer or contract. If you require clarification on any points then please contact us, especially if you're traveling some distance to view. Please note that appliances and heating systems have not been tested and therefore no warranties can be given as to their good working order.