

Upham Park Road, W4

£923 Per week (£4,000 pcm)

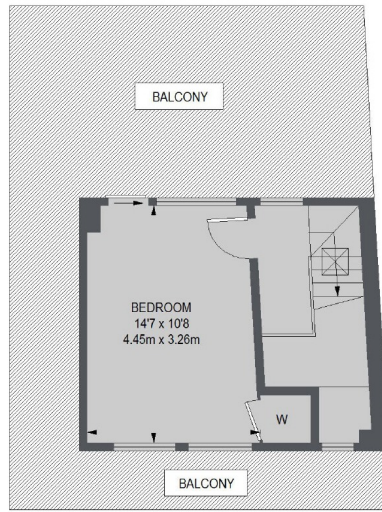
A new townhouse built and designed by award winning architects with an open plan living area with fully fitted kitchen and two decked terraces.

Upham Park Road is a quiet sought after tree lined residential cul-de-sac, allowing easy access to Chiswick High Road and Turnham Green Underground Station.

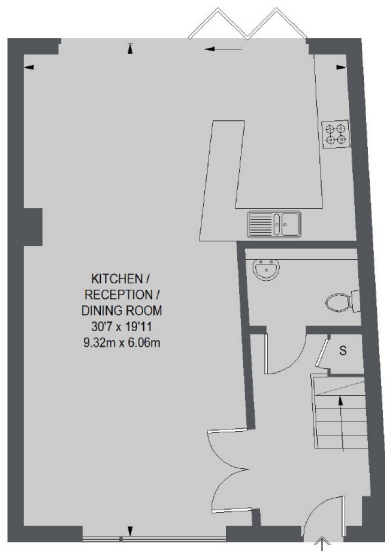
- Four bedroom Townhouse • Two Bathrooms • Secure Underground Parking • Architecturally Designed • Private Decked Terrace • Open Plan Living Area •

FLETCHERS

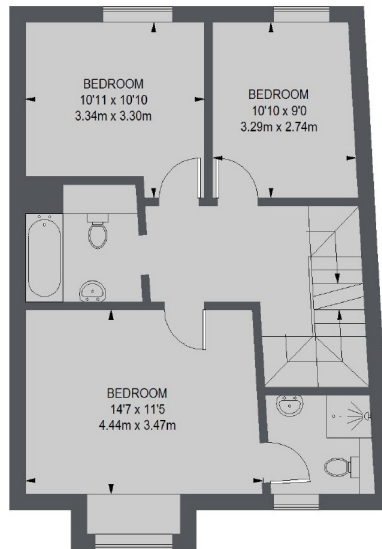
ESTATE AGENTS



SECOND FLOOR



GROUND FLOOR



FIRST FLOOR

TOTAL APPROX. FLOOR AREA 1482 SQ. FT. (137.70 SQ. M.)

Fletchers Chiswick High Road Lettings
86 Chiswick High Road, Chiswick, London, W4 1SY
020 8742 4100
chiswicklettings@fletcherstates.com

Energy Rating: B. We aim to make our particulars both accurate and reliable. However they are not guaranteed; nor do they form part of an offer or contract. If you require clarification on any points then please contact us, especially if you're traveling some distance to view. Please note that appliances and heating systems have not been tested and therefore no warranties can be given as to their good working order.