

ROKSTONE



Homer Street, Marylebone W1H

A delightful two bedroom apartment within an attractive modern development which benefits from a private balcony and its own allocated underground parking space. This well maintained apartment is situated on the second floor of a popular block and measures approximately 785 sq ft of lateral accommodation. The flat is bright, spacious and well located making it an ideal rental investment or London pied-à-terre.

Located on the west side of Marylebone which is now considered to be one of the Golden postcodes with its central location surrounded by many beautiful restaurants and boutiques on Marylebone High Street.

Transportation links nearby include London underground services from Marble Arch (Central Line), Baker Street (Jubilee, Metropolitan, Bakerloo, Hammersmith & City, & Circle), Edgware Road (District, Circle, Hammersmith & City) as well as National Rail services from Marylebone and Paddington (including Heathrow Express).

Price £875,000



5 Dorset Street London W1U 6QJ

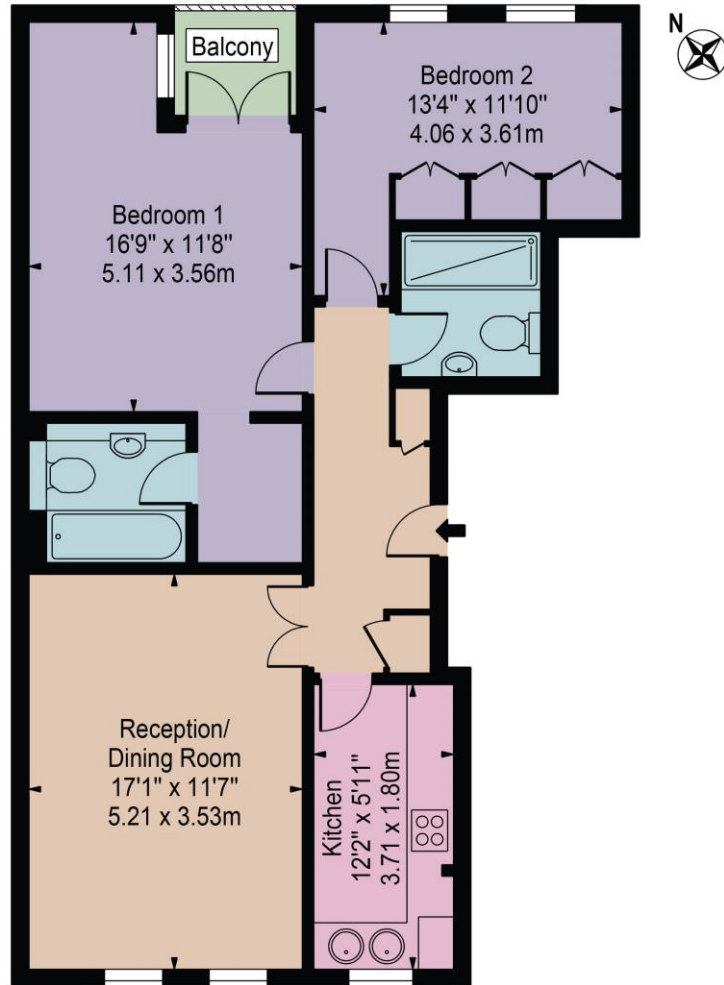
Tel: 020 7580 2030 | Email: enquiries@rokstone.com

<https://www.rokstone.com>

ROKSTONE

Varsity Court

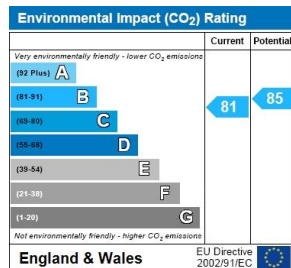
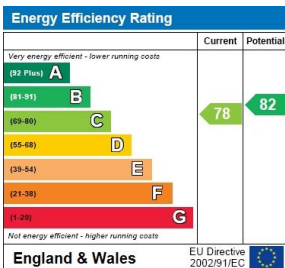
Approx. Gross Internal Area 785 Sq Ft - 72.93 Sq M



Second Floor

For Illustration Purposes Only - Not To Scale

This floor plan should be used as a general outline for guidance only and does not constitute in whole or in part an offer or contract. Any intending purchaser or lessee should satisfy themselves by inspection, searches, enquiries and full survey as to the correctness of each statement. Any areas, measurements or distances quoted are approximate and should not be used to value a property or be the basis of any sale or let.



Terms

Local Authority: Westminster City Council

Tenure: Leasehold

Lease: 90+

Service Charge: £2,167.20PA

Ground Rent: £125PA

5 Dorset Street London W1U 6QJ

Tel: 020 7580 2030 | Email: enquiries@rokstone.com

<https://www.rokstone.com>