

SNELLERS

ESTATE AGENTS



Kingshill Avenue, KT4

£1,850 PCM

This newly refurbished house is perfect for a family, with a spacious open plan reception room and kitchen, three double bedrooms, space for an office and private garden.

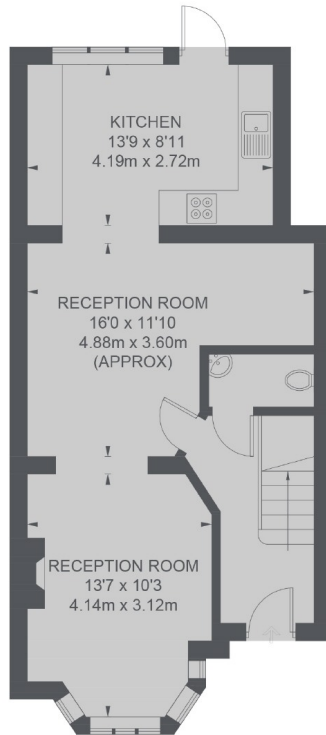
Kingshill Avenue is a 15 minute walk to Worcester Park Station and High Street.

- Three Double Bedrooms • Open Plan Reception • Modern Kitchen •
- Refurbished • Downstairs W/C • Private Garden •

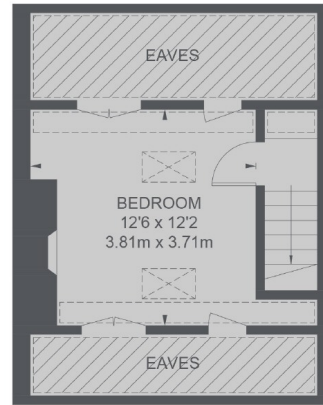
SNELLERS

ESTATE AGENTS

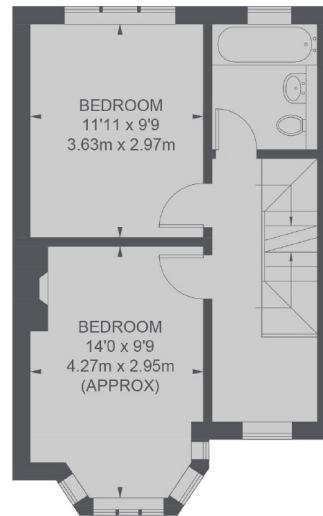
 = REDUCED HEADROOM BELOW 1.5M / 5'0"



GROUND FLOOR



SECOND FLOOR



FIRST FLOOR

TOTAL APPROX. FLOOR AREA 1110 SQ. FT. (103.1 SQ. M.)
(EXCLUDING EAVES)

Snellers Kingston Lettings
17-21 Richmond Road
Kingston
KT2 5BW
020 8546 0505
kingstonlettings@snellers.co.uk

Energy Rating: D We aim to make our particulars both accurate and reliable. However they are not guaranteed; nor do they form part of an offer or contract. If you require clarification on any points then please contact us, especially if you're traveling some distance to view. Please note that appliances and heating systems have not been tested and therefore no warranties can be given as to their good working order