

FLETCHERS

ESTATE AGENTS



Ivy Crescent, W4

£899,999

In this calm residential crescent just off Bollo Lane, a lovely three bedroom bay fronted terraced house with lots of character with original period features and a secluded south west facing garden. There is further potential to extend into the loft and side return (STPP).



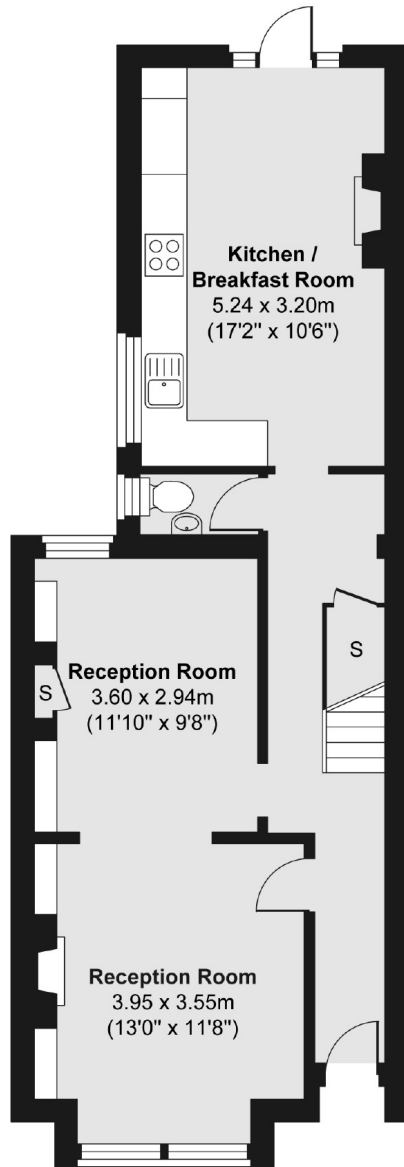
In this calm residential crescent just off Bollo Lane, a lovely three bedroom bay fronted terraced house with lots of character with original period features and a secluded south west facing garden. There is further potential to extend into the loft and side return (STPP).

Ivy Crescent is in a great spot close to Chiswick Park station with the fabulous selection of boutiques, restaurants and independent retailers on the High Street just beyond.

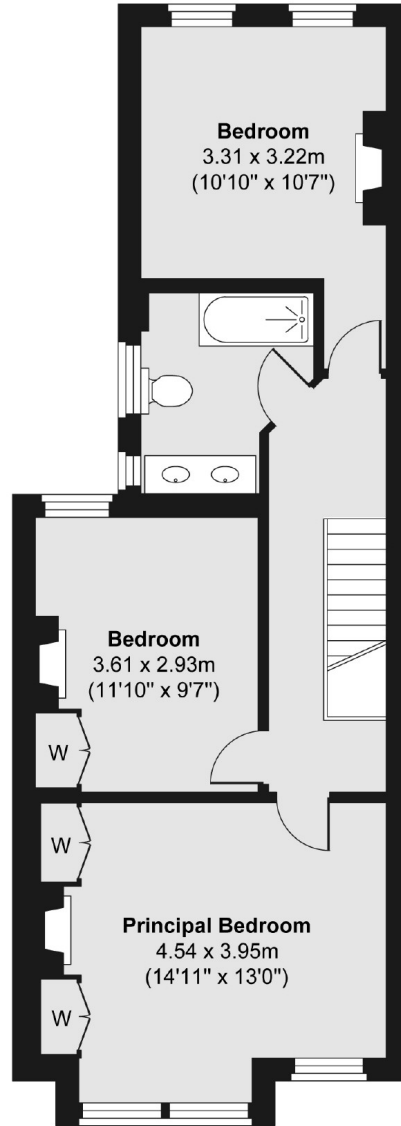
- Three Bedrooms • Bathroom • Double Reception Room •
- Kitchen/Diner • Guest WC • Loft •
- South-West Rear Garden •



Ground Floor



First Floor



Total area (approx.) 108.92 sq. m (1,172 sq. ft)

Fletchers Chiswick Turnham Green Sales
58 Turnham Green Terrace
London
W4 1QP
020 8987 3000
chiswicksales@fletcherestates.com

Energy Rating: D We aim to make our particulars both accurate and reliable. However they are not guaranteed; nor do they form part of an offer or contract. If you require clarification on any points then please contact us, especially if you're traveling some distance to view. Please note that appliances and heating systems have not been tested and therefore no warranties can be given as to their good working order