

# FLETCHERS

ESTATE AGENTS



## Staveley Gardens, W4

£645,000

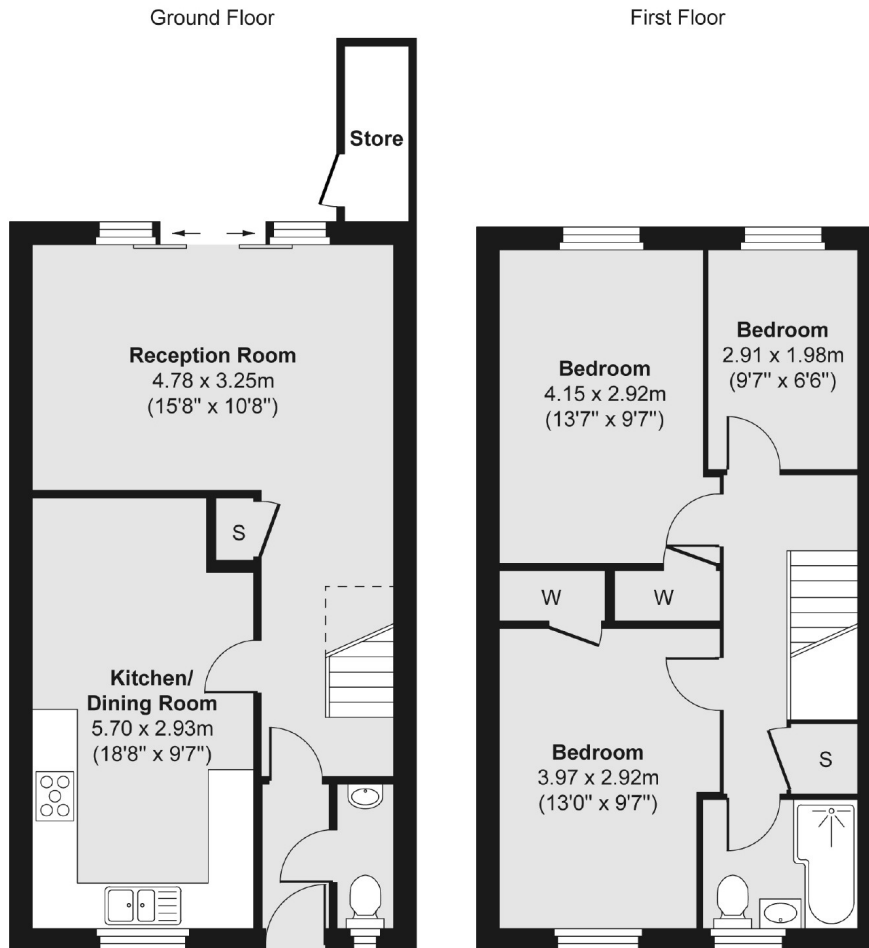
A fantastic end of terrace home with three bedrooms, a large eat-in kitchen and separate reception room which leads out to a superb West facing garden. The house has been finished well and kept in great condition throughout.

Staveley Gardens is surrounded by greenery with Chiswick House and Grounds, Dukes Meadows and popular Riverside walks all nearby. Chiswick overground line has great links into the city, and there is easy access by car to the A4/M4.

- Three Bedrooms • Freehold Home • Eat-In Kitchen • Separate Reception • West Facing Garden • Close to the Riverside •

# FLETCHERS

ESTATE AGENTS



Total area (approx.) 85.83 sq. m (924 sq. ft)  
Store area (approx.) 1.98 sq. m (21 sq. ft)

Fletchers Chiswick Turnham Green Sales  
58 Turnham Green Terrace, London, W4 1QP  
020 8987 3000  
chiswicksales@fletcherestates.com

Energy Rating: D. We aim to make our particulars both accurate and reliable. However they are not guaranteed; nor do they form part of an offer or contract. If you require clarification on any points then please contact us, especially if you're traveling some distance to view. Please note that appliances and heating systems have not been tested and therefore no warranties can be given as to their good working order.