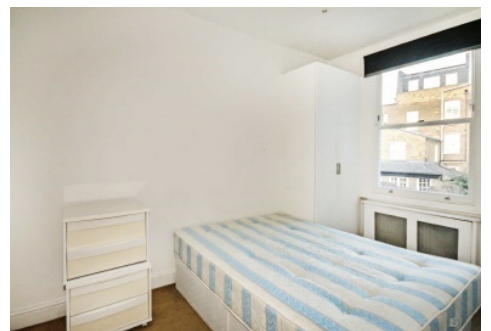


Chard

Lettings



Fulham Palace Road, SW6

£365 pw (£1,581 pcm)

This two bedroom, first floor flat on Fulham Palace Road is ideally situated close to Putney Bridge tube station and is directly opposite Bishops Park. This property offers an open plan living area with a fitted kitchen, high ceilings, two good size double bedrooms.

Putney Bridge tube station is close by in addition to many bus routes into the city, Putney and Hammersmith. There is a selection of local amenities, restaurants and cafes on Fulham Road and on Fulham high street, moments away from the property.

- Two Bedrooms • Open Plan • Fitted Kitchen •

Chard

— Lettings —

Chard Fulham
5 Harwood Road,
London, SW6 4QP
020 7384 1400
fulhamlettings@chard.co.uk

Energy Rating: D. We aim to make our particulars both accurate and reliable. However they are not guaranteed; nor do they form part of an offer or contract. If you require clarification on any points then please contact us, especially if you're traveling some distance to view. Please note that appliances and heating systems have not been tested and therefore no warranties can be given as to their good working order.

