



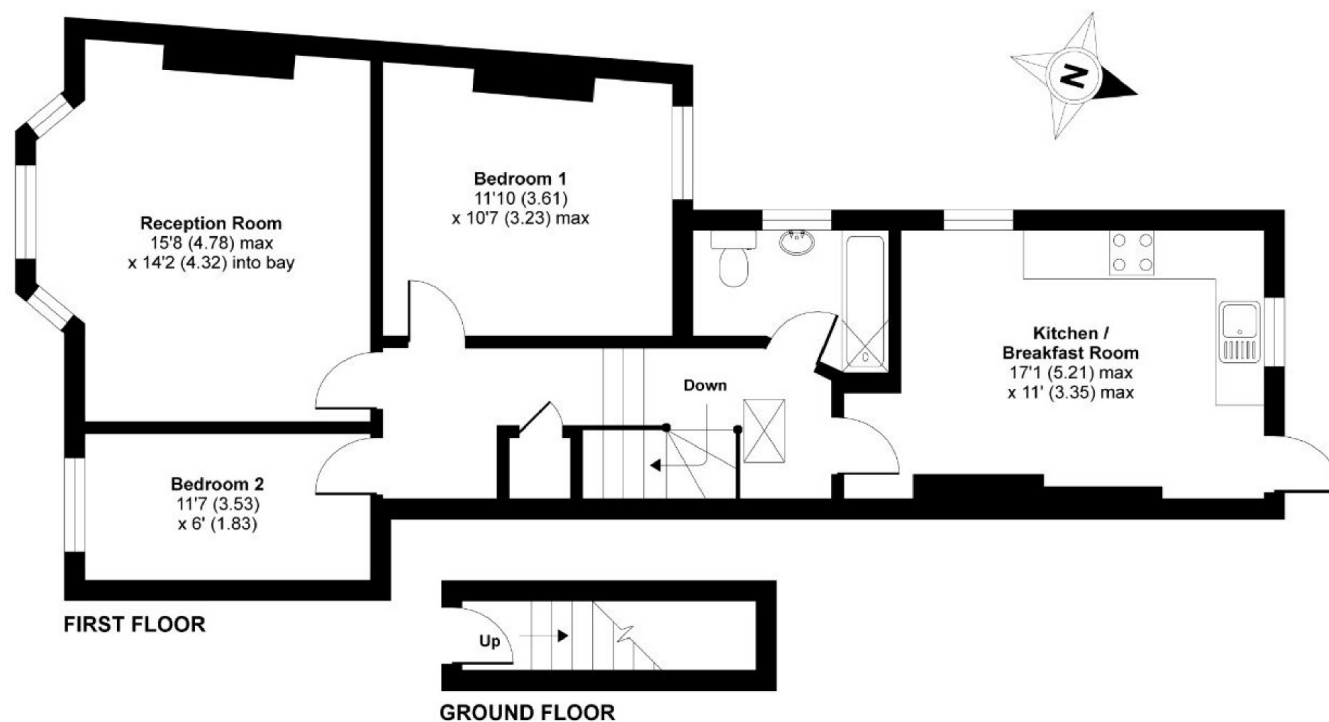
## Radbourne Road, SW12

**£1,600 PCM**

This two bedroom maisonette offered in good condition throughout, would be suitable for a professional couple.

- Top Floor Flat
- Modern Fitted Kitchen
- Two Bedrooms
- Modern Fitted Bathroom
- Close To Balham Station
- Unfurnished

For further information on the costs associated with renting a property, please pop into our office or visit our website.



APPROX. GROSS INTERNAL FLOOR AREA 765 SQ FT 71 SQ METRES

**Radbourn Road, London, SW12**

Copyright nichecom.co.uk 2017 Produced for Jacksons the Independent Estate Agents REF : 161405

Jacksons Balham  
8-11 Balham Station Road  
London  
SW12 9SG  
020 8675 6565  
balham.lettings@jacksonsestateagents.com

Energy Rating: C We aim to make our particulars both accurate and reliable. However they are not guaranteed; nor do they form part of an offer or contract. If you require clarification on any points then please contact us, especially if you're traveling some distance to view. Please note that appliances and heating systems have not been tested and therefore no warranties can be given as to their good working order.