

ROKSTONE

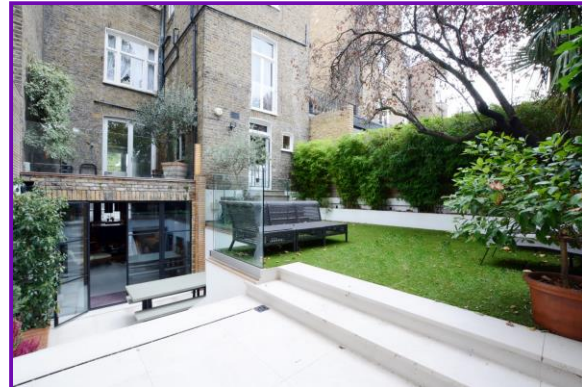


Pembroke Gardens, Kensington, W8

A rarely available family home on one of Kensington's prettiest streets. The house is entered to on the raised ground floor level with a grand entrance, beautiful formal double reception room with high ceilings and access onto one of the terraces. There is also a wood panelled study, coat storage and w/c on this entrance level. The lower ground floor has been opened up into an incredible kitchen/family space with chef grade kitchen (multiple ovens, dishwashers) making it ideal for a large family or for entertaining. The large entertaining space off the kitchen leads through to the dining room, and onto the patio area of the landscaped garden. Downstairs there is a well equipped utility room, and small staff flat with bed, kitchenette and ensuite.

On the upper level there is a snug TV room, and an opulent principal bedroom the width of the entire house with three large french-doors opening up onto a balcony at the front of the house. There is also a dressing room and large en-suite bathroom. There are five further double bedrooms and three bathrooms as well as a south facing decked terrace.

The house is located south of Kensington High Street on a wide residential road. Kensington is an extremely popular area for families due to the proximity to world class schools, an array of amenities including two Royal Parks (Holland and Hyde Park), as well as the conveniences of Whole Foods, Waitrose and Marks and Spencer.



Price £8,250 pw

Olivia McSweeney | Head of Lettings
D: 020 3219 5679 | M: 07584633058 | E: olivia@rokstone.com
5 Dorset Street, London, W1U 6QJ

ROKSTONE

Pembroke Gardens, Kensington
 Approximate Gross Internal Area
 5890 sq ft - 547 sq m

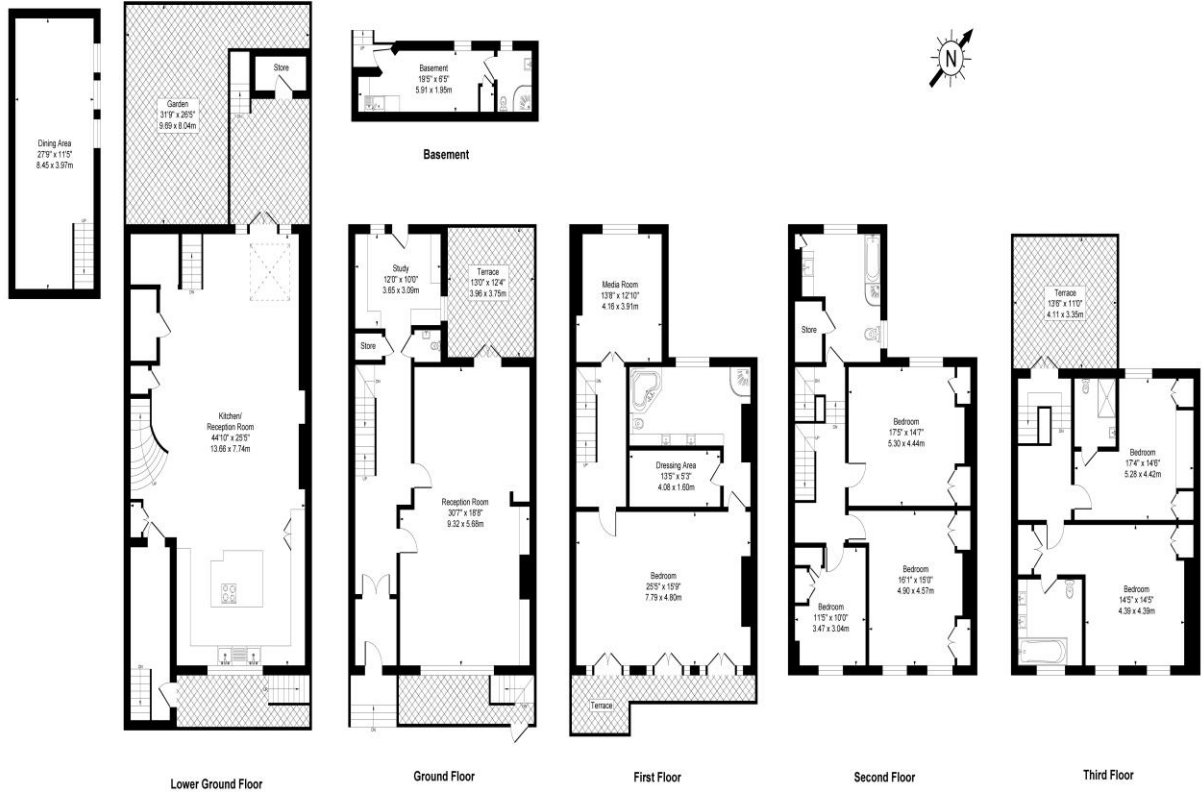
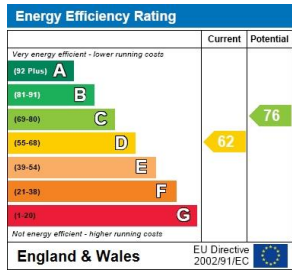


Illustration for identification purposes only, not to scale



Olivia McSweeney | Head of Lettings
 D: 020 3219 5679 | M: 07584633058 | E: olivia@rokstone.com
 5 Dorset Street, London, W1U 6QJ