



Winterfield Park, Bristol, BS39 7RY

£259,000

- Energy Rating - C
- 4th Bedroom/Office
- Views To Front
- Three Double Bedrooms
- Well Presented Throughout
- South Facing Rear Garden
- En-Suite
- Parking Space For Two Cars
- Garage

*****3D INTERACTIVE TOUR***** BARONS are very pleased to welcome this large three/four bedroom semi-detached home in the sought after village of Paulton to the market. Close to all local amenities including a school, shops, pubs, hospital, swimming pool and a very popular Italian restaurant. Next to bus routes and commuting distance to Bath. The property comprises Entrance porch, Hallway, an office which could be used as a fourth bedroom if you desire. A large living/dining room with patio doors leading to the well maintained south facing rear garden. The extended kitchen has great space, integrated appliances and a breakfast bar area. On the first floor you are greeted with three double bedrooms all with built in Wardrobes with the master having an en-suite. You also have a bright modern family bathroom. Call Barons now on 01761 411411 to arrange viewing.

Entrance Porch 6'2 x 4'9 (1.88m x 1.45m)

Entrance Hall 11'3 x 6'1 (3.43m x 1.85m)

Living/Dining Room 19'0 x 13'5 (5.79m x 4.09m)

Kitchen 15'3 x 8'2 (4.65m x 2.49m)

Office/4th Bedroom 11'3 x 6'9 (3.43m x 2.06m)

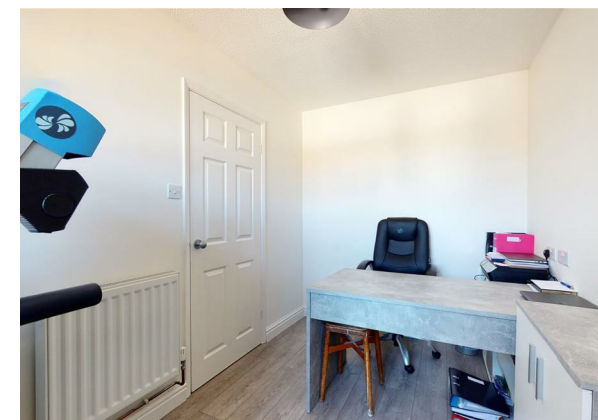
Bedroom One 12'2 x 8'6 (3.71m x 2.59m)

En-Suite

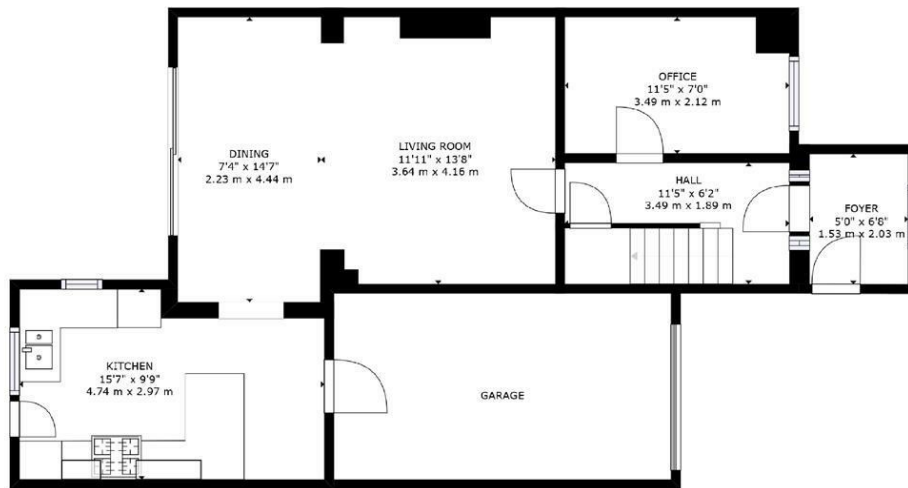
Bedroom Two 11'2 x 8'3 (3.40m x 2.51m)

Bedroom Three 10'4 x 8'5 (3.15m x 2.57m)

Bathroom 7'5 x 4'1 (2.26m x 1.24m)





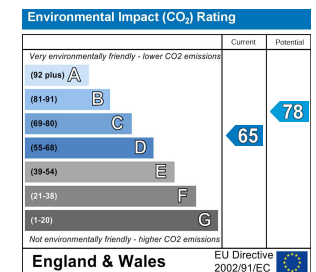
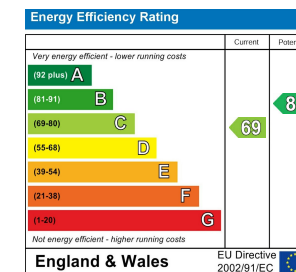


FLOOR 1



FLOOR 2

GROSS INTERNAL AREA
FLOOR 1: 620 sq ft, 58 m², FLOOR 2: 466 sq ft, 43 m²
TOTAL: 1086 sq ft, 101 m²
SIZES AND DIMENSIONS ARE APPROXIMATE, ACTUAL MAY VARY.



These particulars, whilst believed to be accurate are set out as a general outline only for guidance and do not constitute any part of an offer or contract. Intending purchasers should not rely on them as statements of representation of fact, but must satisfy themselves by inspection or otherwise as to their accuracy. No person in this firm's employment has the authority to make or give any representation or warranty in respect of the property.