

SNELLERS

ESTATE AGENTS



Newry Road, TW1

£810,000

A unique opportunity to acquire this three bedroom Victorian family home offered to the market with no onward chain and set on this popular residential road in St Margarets.

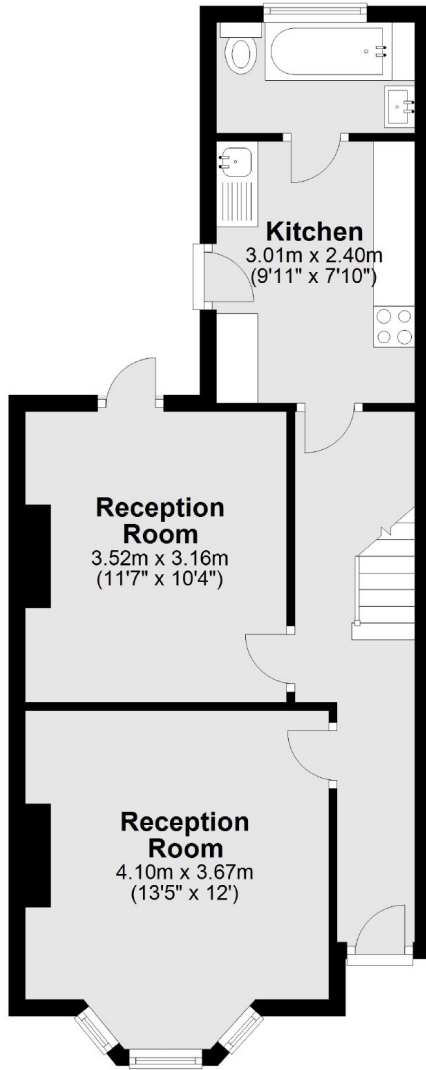
Newry Road is a quiet residential Victorian road in St Margarets just moments from the River Thames and its tow path walks into Richmond.

- Unique Opportunity • Victorian Family Home • Three Bedrooms •
- Potential to Extend • Large Private Garden • No Chain •

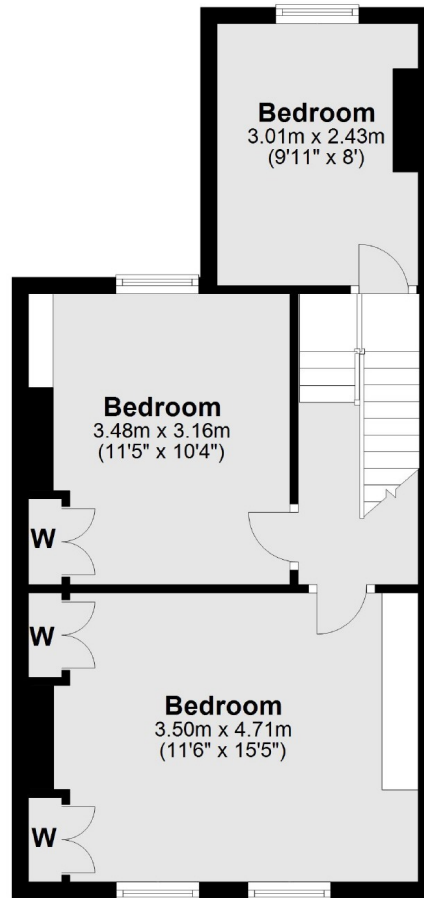
SNELLERS

ESTATE AGENTS

Ground Floor



First Floor



Total area: approx. 86.5 sq. metres (931.4 sq. feet)

Snellers St. Margarets Sales
36 Crown Road
St Margarets
TW1 3EH
020 8892 8008
stmargaretssales@snellers.co.uk

Energy Rating: We aim to make our particulars both accurate and reliable. However they are not guaranteed; nor do they form part of an offer or contract. If you require clarification on any points then please contact us, especially if you're traveling some distance to view. Please note that appliances and heating systems have not been tested and therefore no warranties can be given as to their good working order