

# SNELLERS

ESTATE AGENTS



## Chertsey Road, TW1

£2,500 PCM

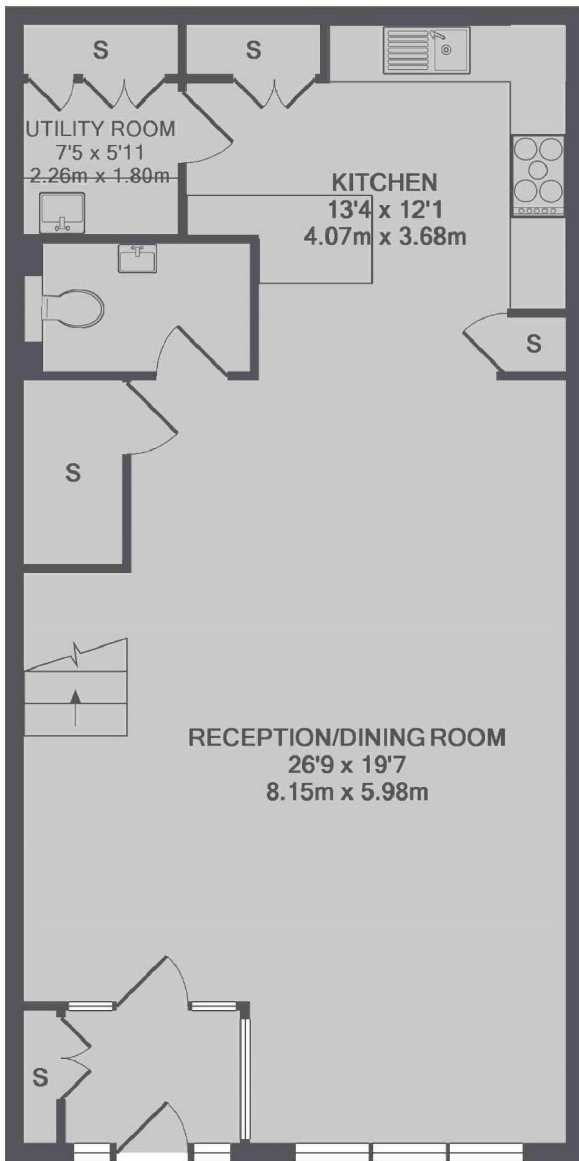
This two bedroom, two bathroom Art Deco conversion property is split over two floors and has a spacious open-plan kitchen / reception, two double bedrooms (principle ensuite) and a family bathroom. Further benefits include allocated parking.

Located in the heart of St Margarets Village, Globe House is moments from St Margarets train station and numerous cafes, restaurants and boutique shops.

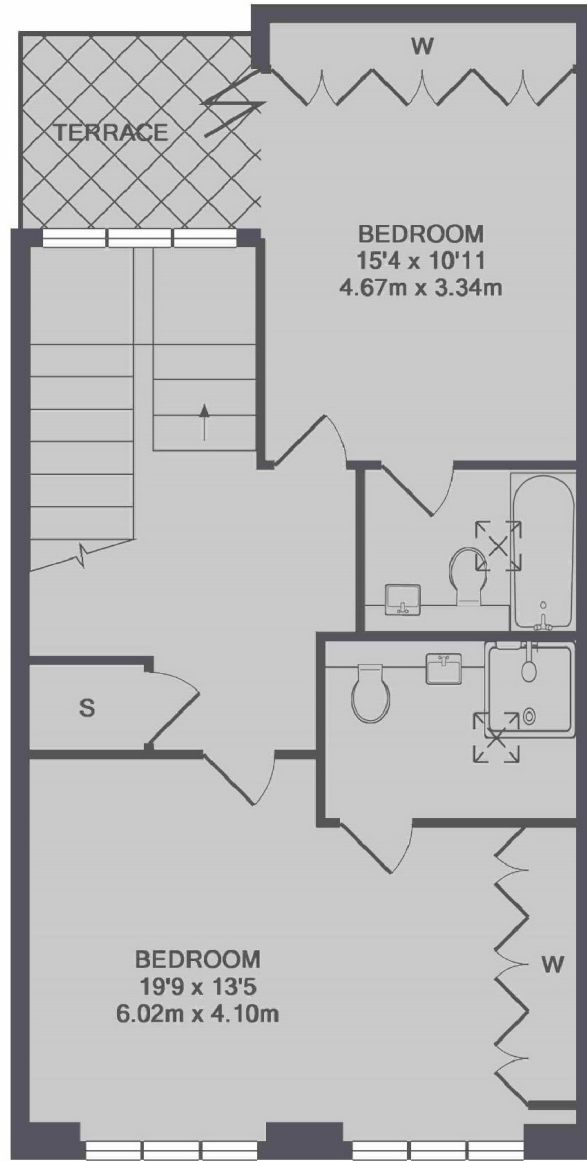
- Art Deco Conversion • Two Bedroom House • Two Bathrooms •
- Private Terrace • Allocated Parking • Great Location •

# SNELLERS

ESTATE AGENTS



GROUND FLOOR



1ST FLOOR

TOTAL APPROX. FLOOR AREA 1498 SQ.FT. (139.2 SQ.M.)

Snellers St. Margarets Lettings  
36 Crown Road  
St Margarets  
TW1 3EH  
020 8892 0700  
[stmargaretslettings@snellers.co.uk](mailto:stmargaretslettings@snellers.co.uk)

Energy Rating: D We aim to make our particulars both accurate and reliable. However they are not guaranteed; nor do they form part of an offer or contract. If you require clarification on any points then please contact us, especially if you're traveling some distance to view. Please note that appliances and heating systems have not been tested and therefore no warranties can be given as to their good working order