

FLETCHERS

ESTATE AGENTS



Anstice Close, W4

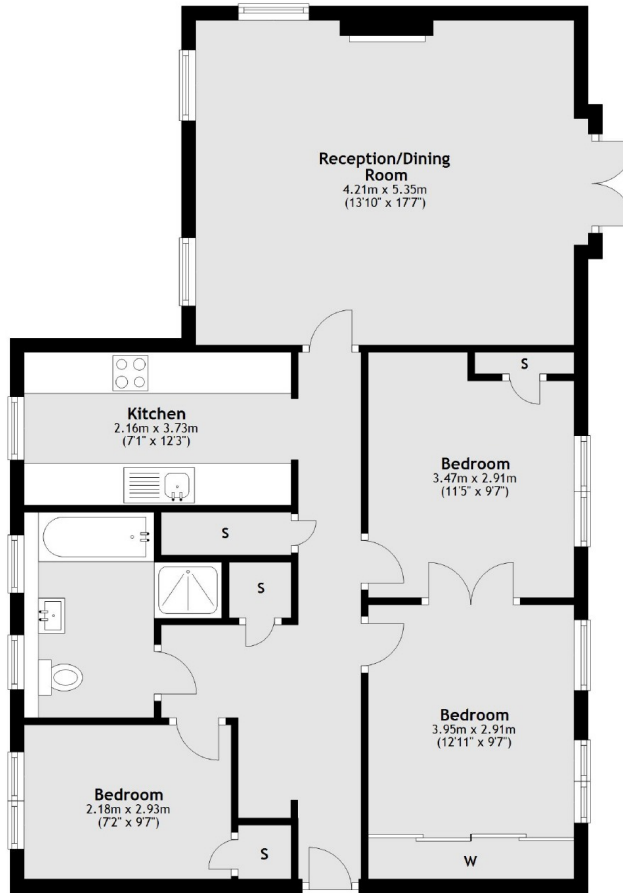
£550,000

This ground floor apartment has superb lateral space (c. 898 sq foot), including three double bedrooms- one of which is flexible and can be used as a dressing room or home office- A large reception room and separate kitchen. Chain Free.

Anstice Close is a popular development due to its proximity to the Riverside, with access to some picturesque walks along the Thames trail, with Dukes Meadows and Chiswick House and Grounds both within walking distance.

- Three Double Bedrooms • Lateral Space c. 898 sq ft • Four Piece Bathroom • 18' by 13' Reception Room • Communal Gardens • Off Street Parking •

Ground Floor



Total area: approx. 83.5 sq. metres (898.3 sq. feet)

Fletchers Chiswick Turnham Green Sales
58 Turnham Green Terrace, London, W4 1QP
020 8987 3000
chiswicksales@fletcherestates.com

Energy Rating: . We aim to make our particulars both accurate and reliable. However they are not guaranteed; nor do they form part of an offer or contract. If you require clarification on any points then please contact us, especially if you're traveling some distance to view. Please note that appliances and heating systems have not been tested and therefore no warranties can be given as to their good working order.