

SNELLERS

ESTATE AGENTS



Park Farm Road, KT2

£420,000

An incredibly spacious first floor one bedroom period conversion flat situated in a pretty residential street offered for sale with the benefit of no forward chain.

The apartment is situated in a pretty residential street, less than a mile from Kingston Station. The River Thames is even closer to hand and there are local shops almost on the doorstep.

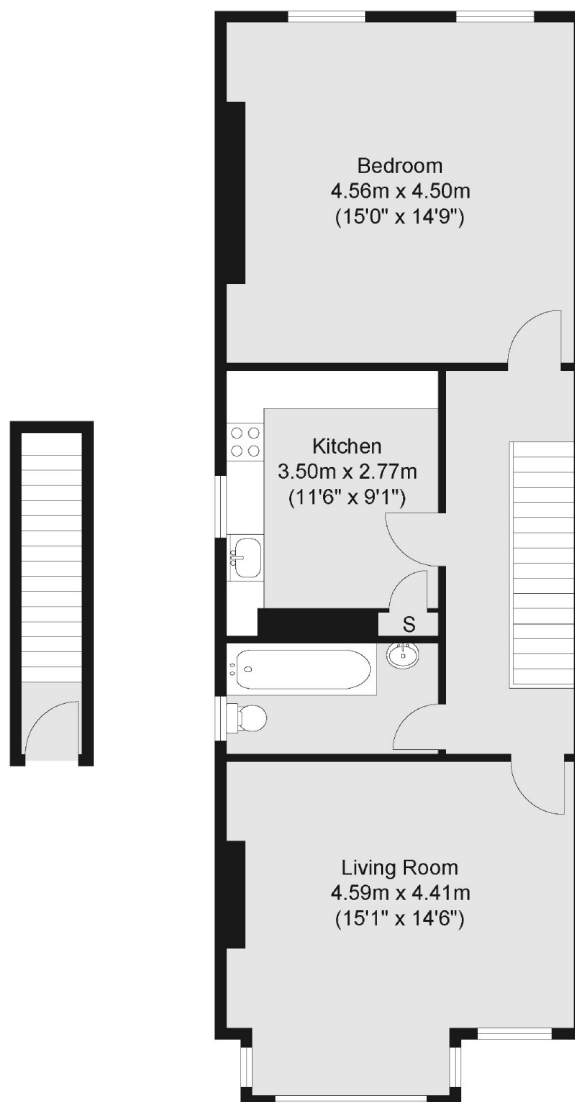
- Over 700 Sq Ft • No Forward chain • Reception Room •
- Kitchen • Bedroom • Bathroom •

SNELLERS

ESTATE AGENTS

Ground Floor

First Floor



Total area (approx.): 66.70 sq. m (717.95 sq. ft)

Snellers Kingston Sales
17-21 Richmond Road
Kingston
KT2 5BW
020 8546 8715
kingstonsales@snellers.co.uk

Energy Rating: D We aim to make our particulars both accurate and reliable. However they are not guaranteed; nor do they form part of an offer or contract. If you require clarification on any points then please contact us, especially if you're traveling some distance to view. Please note that appliances and heating systems have not been tested and therefore no warranties can be given as to their good working order