

Chard

Lettings



Britannia Road, SW6

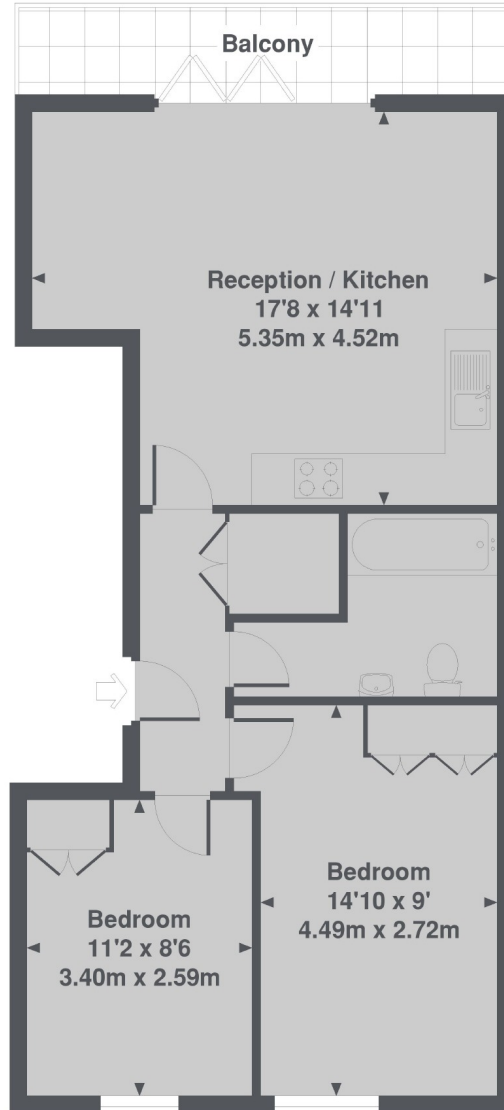
£530 pw (£2,275 pcm)

This two double bedroom, top floor converted apartment in Moore Park Estate has a bright and spacious open-plan living area, with a modern integrated kitchen and access to a private terrace. The property has a modern bathroom, part wood flooring with underfloor heating and a built-in audio system.

Britannia Road is located off Fulham Road in Moore Park Estate with excellent bus links leading into Chelsea, the city and Fulham Broadway station (District line) is moments away. Fulham offers a great selection of eateries and popular local amenities all on your doorstep.

Chard

Lettings



Britannia Road, SW6

Total Approx. Floor area 581 Sq. Ft. (54.0 Sq. M.)

Chard Fulham
5 Harwood Road,
London, SW6 4QP
020 7384 1400
fulhamlettings@chard.co.uk

Energy Rating: C. We aim to make our particulars both accurate and reliable. However they are not guaranteed; nor do they form part of an offer or contract. If you require clarification on any points then please contact us, especially if you're traveling some distance to view. Please note that appliances and heating systems have not been tested and therefore no warranties can be given as to their good working order.