

# Chard

— Lettings —



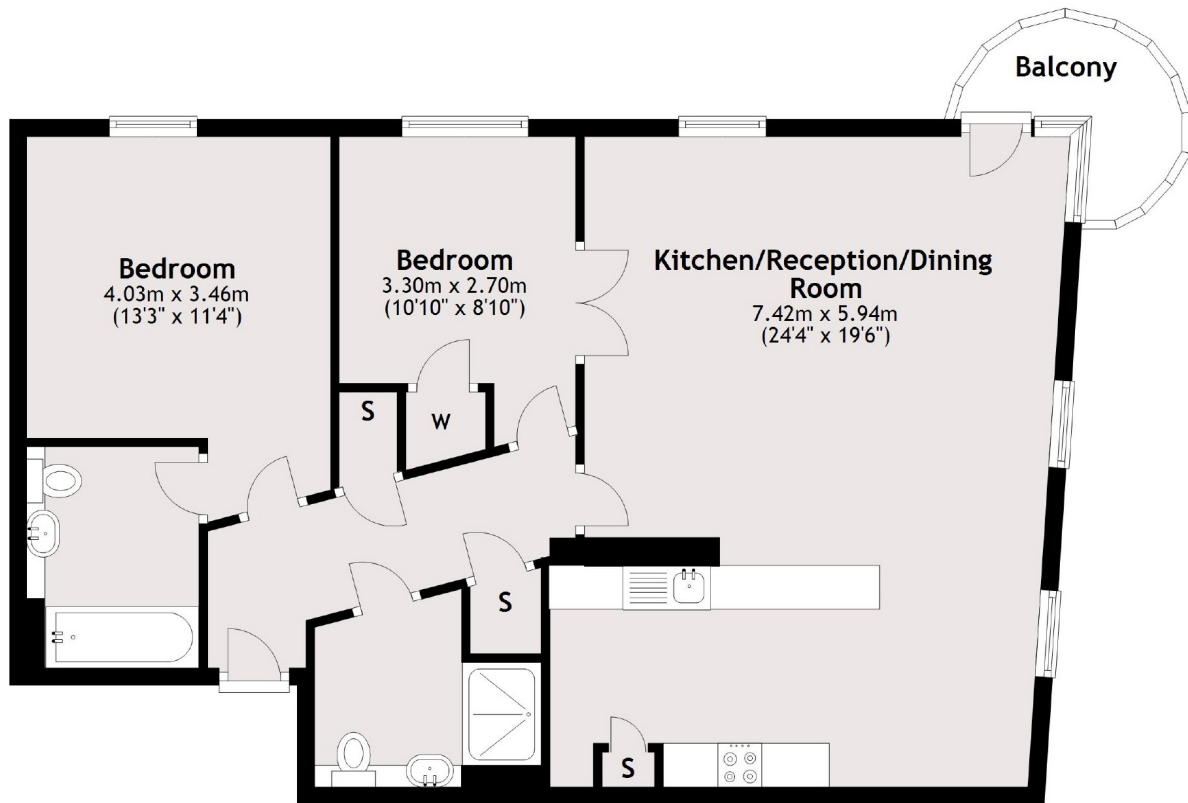
## Farm Lane, SW6

£519 pw (£2,350 pcm)

A bright apartment consisting of an open-plan living area with a modern integrated kitchen, two double bedrooms, a private balcony, well-maintained communal gardens. The flat is situated in the popular Fulham Island building in the heart of Fulham.

Fulham Broadway has a wide range of local amenities, restaurants and cafés. Fulham Broadway station (District line) is also close by in addition to excellent bus routes leading into the city, Hammersmith and Wandsworth.

- Two Bedrooms • Two Bathrooms • Open-Plan Living •



**Second Floor**

Total area: approx. 82.2 sq. metres (884.4 sq. feet)

Chard Fulham  
5 Harwood Road,  
London, SW6 4QP  
020 7384 1400  
fulhamlettings@chard.co.uk

Energy Rating: B. We aim to make our particulars both accurate and reliable. However they are not guaranteed; nor do they form part of an offer or contract. If you require clarification on any points then please contact us, especially if you're traveling some distance to view. Please note that appliances and heating systems have not been tested and therefore no warranties can be given as to their good working order.