

FLETCHERS

ESTATE AGENTS



Cumberland Park, W3

£595,000

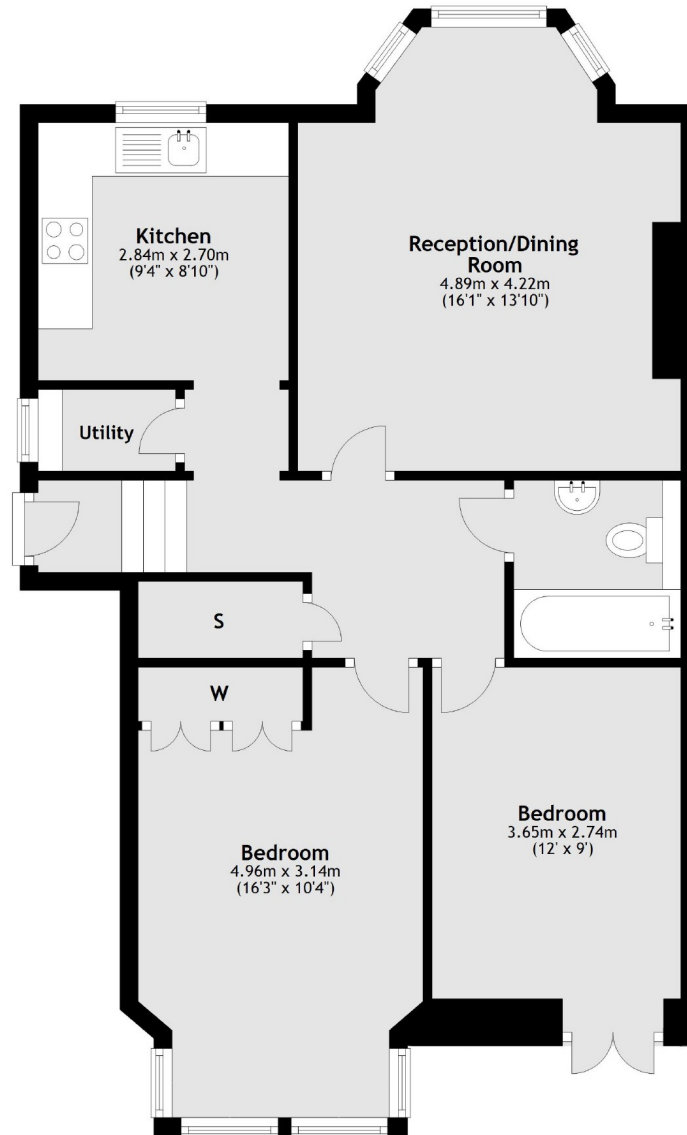
On the ground floor of this handsome semi detached Victorian property, a grand high ceilinged two bedroom garden flat with both a private and communal garden.

The flat features a private entrance, gorgeous reception room with large windows overlooking the garden, two good bedrooms, an eat-in kitchen and the rare advantage of private off street parking.

Cumberland Park is a peaceful residential turning in Poets Corner, with a great range of independent retailers on Churchfield Road, Acton Central overground station, and larger supermarkets on Acton High Street all within easy reach.

- Two Double Bedrooms • Bathroom • Grand Reception Room • Kitchen/Breakfast Room • Private and Communal Garden • Off Street Parking • Share Of Freehold •

Ground Floor



Total area: approx. 69.0 sq. metres (742.9 sq. feet)

Fletchers Chiswick Turnham Green Sales
58 Turnham Green Terrace, London, W4 1QP
020 8987 3000
chiswicksales@fletcherestates.com

Energy Rating: C. We aim to make our particulars both accurate and reliable. However they are not guaranteed; nor do they form part of an offer or contract. If you require clarification on any points then please contact us, especially if you're traveling some distance to view. Please note that appliances and heating systems have not been tested and therefore no warranties can be given as to their good working order.