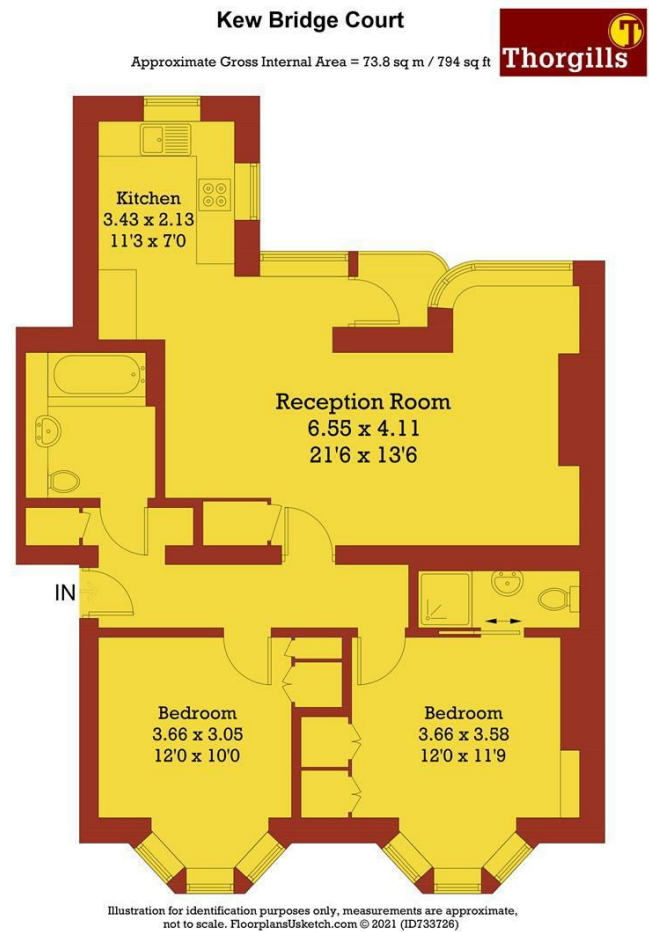


Kew Bridge Court, Chiswick, W4 3AE

£1,820 PCM



Floor Plan



These particulars, whilst believed to be accurate are set out as a general outline only for guidance and do not constitute any part of an offer or contract. Intending purchasers should not rely on them as statements of representation of fact, but must satisfy themselves by inspection or otherwise as to their accuracy. No person in this firms employment has the authority to make or give any representation or warranty in respect of the property.

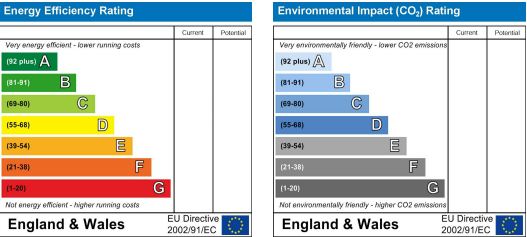
Accommodation

- Gated Development
- Concierge
- Parking Upon Request
- Personal Balcony
- Open-Plan Living Room
- Fully Fitted Kitchen
- 2 Tiled Bathrooms
- Dining Area
- Ample Storage
- Entryphone System

Viewing

Please contact our Brentford branch on 020 8994 9886 if you wish to arrange a viewing appointment for this property or require further information.

Energy Efficiency Graph



SALES & LETTINGS  
020 8994 9886

CLIENT SUPPORT  
020 8560 9555

PROPERTY MANAGEMENT  
020 8994 9945

ACCOUNTS  
020 8758 2888

