

ROKSTONE



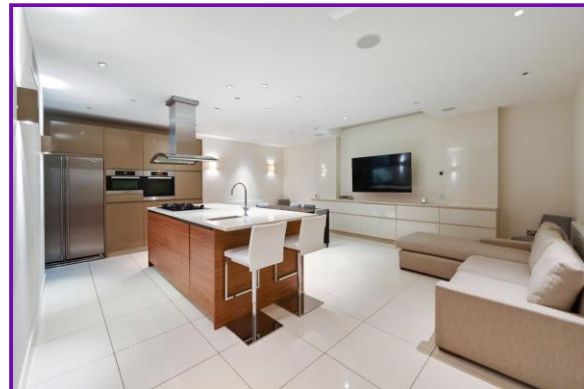
Wilton Row Knightsbridge SW1X

A well presented three storey house on a quiet cobbled mews in Belgravia. The property benefits from three double bedroom suites, spacious kitchen and dining room, ground floor reception room, and mews parking for two cars. The property has been recently refurbished and benefits from air conditioning and hard wood flooring throughout.

The property is situated on a secure mews close to some of London's best known hotels such as The Berkeley and The Lanesborough. The property is also conveniently located for the Piccadilly line at Hyde Park Corner as well as the many shops and restaurants in Knightsbridge.

The property is available part furnished on a long let basis.

Price £3,400 pw



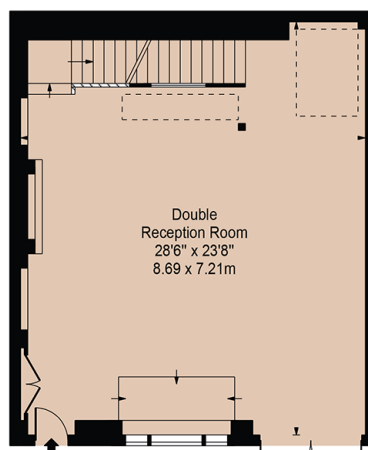
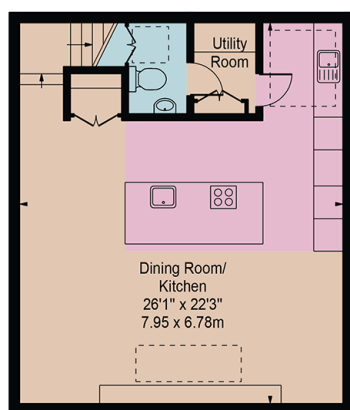
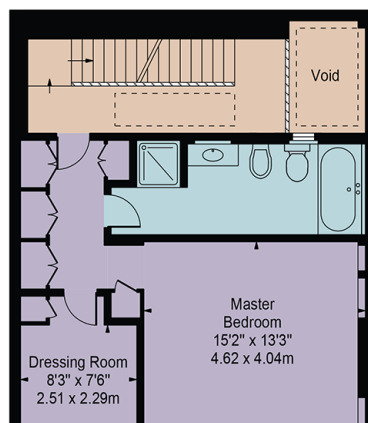
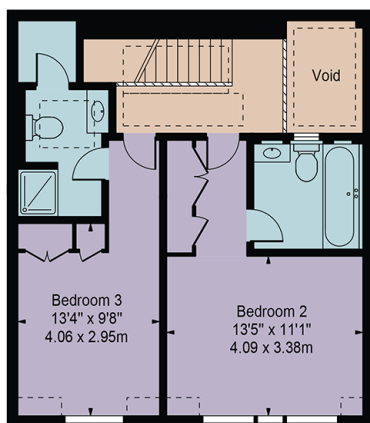
Olivia McSweeney | Head of Lettings
D: 020 3219 5679 | M: 07584633058 | E: olivia@rokstone.com
5 Dorset Street, London, W1U 6QJ

ROKSTONE

Wilton Row

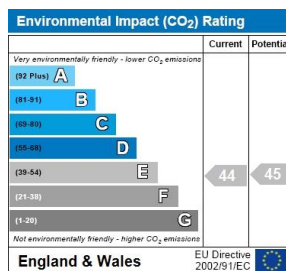
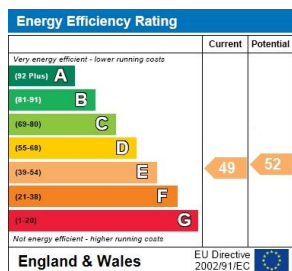
Approx. Gross Internal Area 2408 Sq Ft - 223.71 Sq M
(Including Restricted Height Area & Excluding Void)

Approx. Gross Internal Area 2396 Sq Ft - 222.60 Sq M
(Excluding Restricted Height Area & Void)



For Illustration Purposes Only - Not To Scale

This floor plan should be used as a general outline for guidance only and does not constitute in whole or in part an offer or contract. Any intending purchaser or lessee should satisfy themselves by inspection, searches, enquiries and full survey as to the correctness of each statement. Any areas, measurements or distances quoted are approximate and should not be used to value a property or be the basis of any sale or let.



Olivia McSweeney | Head of Lettings
D: 020 3219 5679 | M: 07584633058 | E: olivia@rokstone.com
5 Dorset Street, London, W1U 6QJ