

# FLETCHERS

ESTATE AGENTS



## Cleveland Avenue, W4

£1,500,000

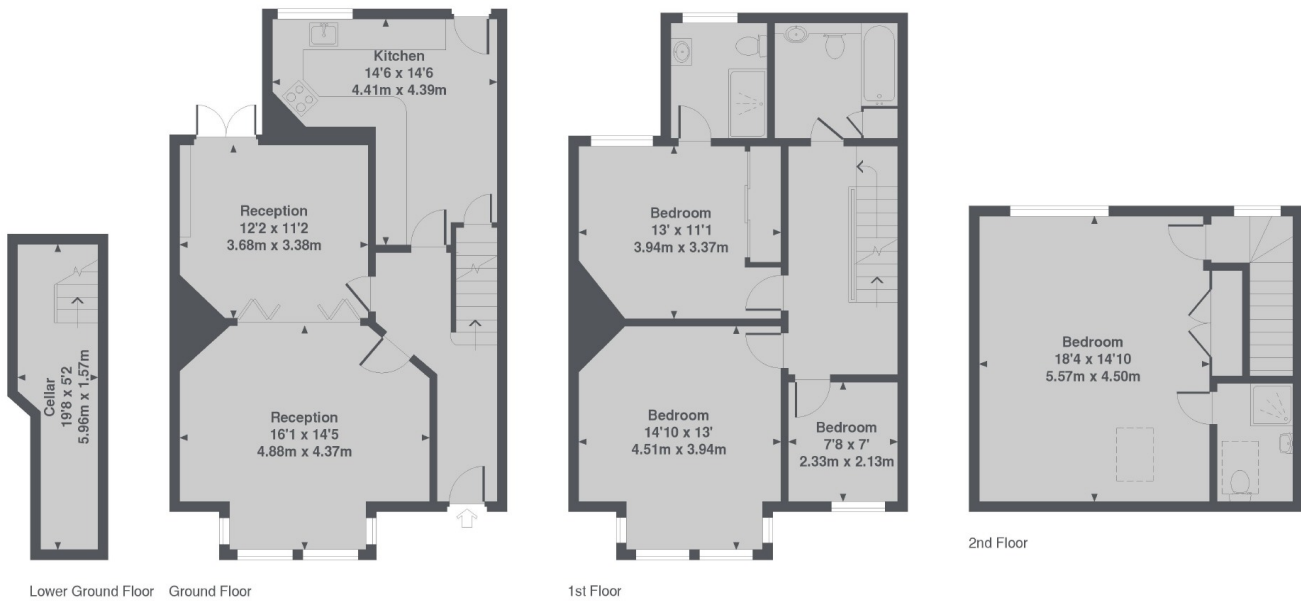
A mid terraced home on a sought after road. The property has four bedrooms and three bathrooms, complemented by an impressive double reception room with original Victorian features and a west-facing garden.

Cleveland Avenue is ideally located off the Chiswick High Road, which offers plenty of amenities within walking distance, and is between Turnham Green and Stamford Brook tube stations.

- Four Bedrooms • Three Bathrooms • Double Reception Room • Separate Kitchen • West-Facing Garden • Centrally Located •

# FLETCHERS

ESTATE AGENTS



Cleveland Avenue, W4  
Total Approx. Floor area 1670 Sq. Ft. (155.1 Sq. M.)

Fletchers Chiswick Turnham Green Sales  
58 Turnham Green Terrace, London, W4 1QP  
020 8987 3000  
[chiswicksales@fletcherestates.com](mailto:chiswicksales@fletcherestates.com)

Energy Rating: E. We aim to make our particulars both accurate and reliable. However they are not guaranteed; nor do they form part of an offer or contract. If you require clarification on any points then please contact us, especially if you're traveling some distance to view. Please note that appliances and heating systems have not been tested and therefore no warranties can be given as to their good working order.