

Is this the one?



£89,950

**Russell Street
Newcastle ST5
8BL**



2



1



1

- Ideal First Time Buy-Investment Opportunity
- Traditional Mid Terraced Property
- Two Double Bedrooms
- Open Plan Lounge/Diner
- Fitted Kitchen
- Downstairs Wet Room

heywoods | 88 |

It's all in the detail.

Ideal First Time Buyer/Investment Opportunity! New to the market with the benefit of no upward chain- This traditional two bedroom mid terraced property is located in the convenient and popular village of Wolstanton, within easy reach of local amenities, schools, Wolstanton Retail Park and with commuting links to A34 & A500. Beautifully presented throughout the accommodation comprises; open plan lounge/diner, fitted kitchen, rear lobby, downstairs wet room, to the first floor there are two double bedrooms. Externally there is a private enclosed rear yard. Viewing is highly recommended!

LOUNGE/DINER 25' 3" x 10' 5" (7.7m x 3.2m)
With composite entrance door, Upvc double glazed window to the front, coving, TV aerial point, coal effect gas fire with surround, understairs storage, Upvc double glazed window to the rear, open plan stairs leading to first floor

FITTED KITCHEN 12' 9" x 5' 2" (3.9m x 1.6m) With a range of base and wall units, under cupboard lighting, sink with mixer tap, space and plumbing for washer machine, space for freestanding fridge/freezer, wall mounted Baxi boiler, fluorescent tube light fitting, Upvc double glazed window to the side, tiled floor covering

REAR LOBBY With Upvc door providing access to the side/yard

DOWNSTAIRS WET/SHOWER ROOM 11' 9" x 5' 2" (3.6 m x 1.6m)
With walk in double shower with Triton electric shower, extractor fan, wash hand basin, WC, Upvc double glazed frosted window to the side

BEDROOM (FRONT) 10' 2" x 10' 2" (3.1m x 3.1m) With built in storage cupboards/wardrobes, Upvc double glazed window, TV aerial point

BEDROOM (REAR) 11' 1" x 10' 5" (3.4m x 3.2m) With built in wardrobes, Upvc double glazed window, loft access

EXTERNALLY Paved private enclosed rear yard with gated access

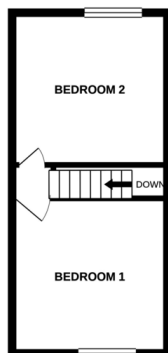
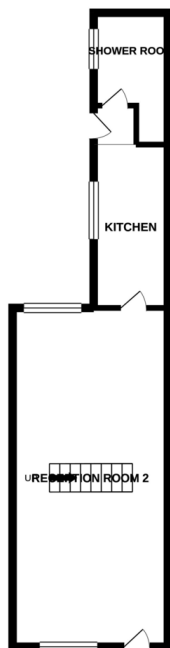


Can you
picture
yourself
here?



GROUND FLOOR

1ST FLOOR



Whilst every attempt has been made to ensure the accuracy of the floorplan contained here, measurements of doors, windows, rooms and any other items are approximate and no responsibility is taken for any error, omission or misstatement. This plan is for illustrative purposes only and should be used as such for any prospective purchaser. The services, systems and appliances shown have not been tested and no guarantee as to their operability or efficiency can be given.

Made with floorplan 05021

Selling & letting
homes throughout
Staffordshire &
Cheshire.



How much would
I get to rent this
property?

hey let's talk to our
lettings guru and find
out...



The Estate Offices Blackfriars
Road Newcastle-under-Lyme
ST5 2EB

01782 617343

heywoodsproperty.co.uk



DISCLAIMER: All measurements are taken electronically and whilst every care is taken with their accuracy they must be considered approximate and should not be relied upon when purchasing carpets or furniture. No responsibility is taken for any error, omission or misunderstanding in these particulars which do not constitute an offer or contract. Services and appliances have not been tested and therefore no warranty is offered on their operational condition.

