



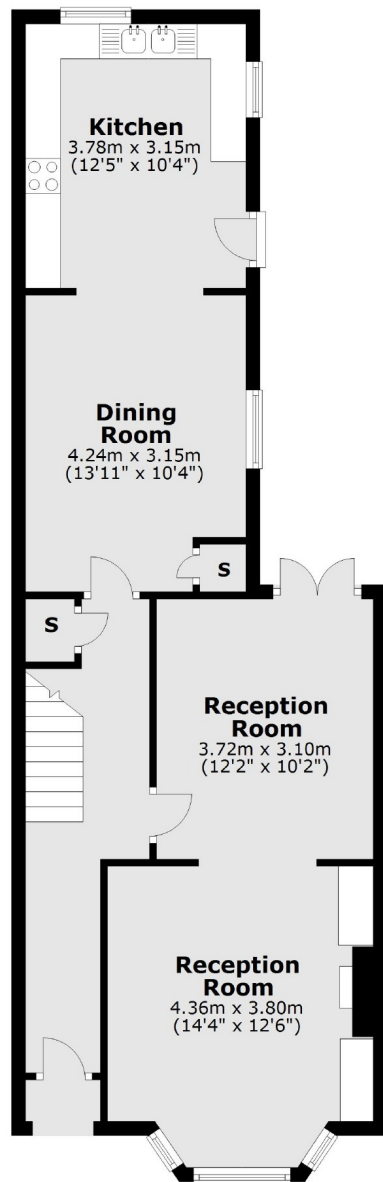
## Clovelly Road, W5

£553 pw (£2,400 pcm)

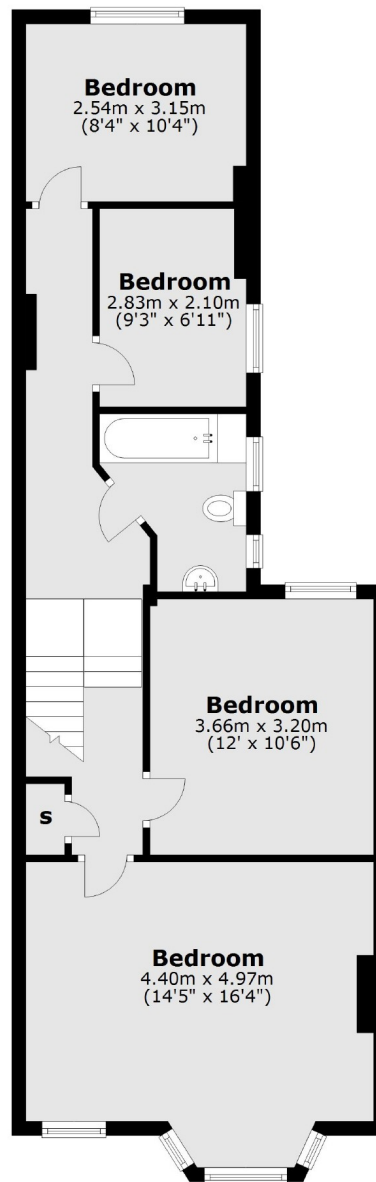
A stunning four bedroom house located on a picturesque tree lined street with gates at the end of the road opening onto Lammas Park. This beautiful home has stripped wooden floors downstairs, a large through lounge with high ceilings and feature fireplace with access to the landscaped rear garden

Clovelly Road is a left residential street close by to South Ealing tube station, Walpole Park and with easy access to Ealing

## Ground Floor



## First Floor



Total area: approx. 127.7 sq. metres (1374.8 sq. feet)

Robertson Smith & Kempson Northfields Lettings  
116 Northfield Avenue, London,  
W13 9RT  
020 8280 2800  
[northfieldslettings@robertsonsmithandkempson.co.uk](mailto:northfieldslettings@robertsonsmithandkempson.co.uk)

Energy Rating: . We aim to make our particulars both accurate and reliable. However they are not guaranteed; nor do they form part of an offer or contract. If you require clarification on any points then please contact us, especially if you're traveling some distance to view. Please note that appliances and heating systems have not been tested and therefore no warranties can be given as to their good working order.