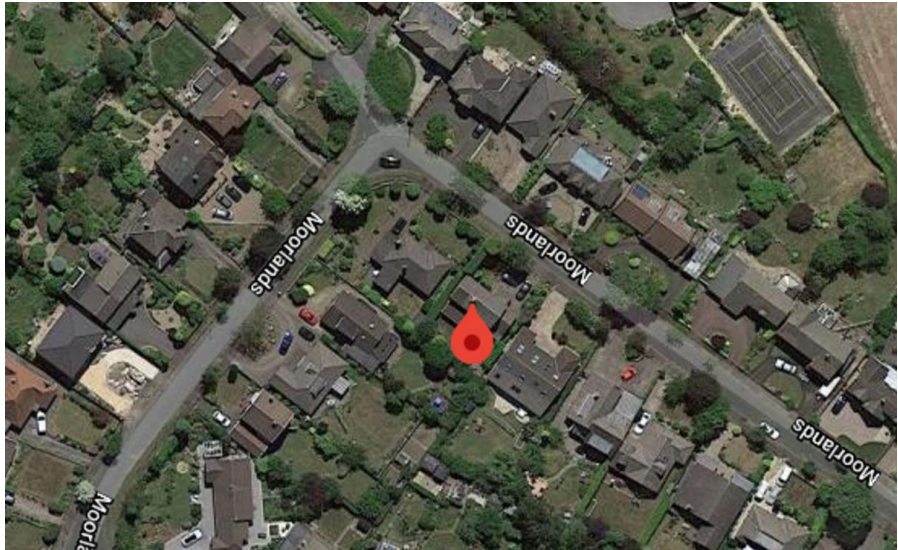
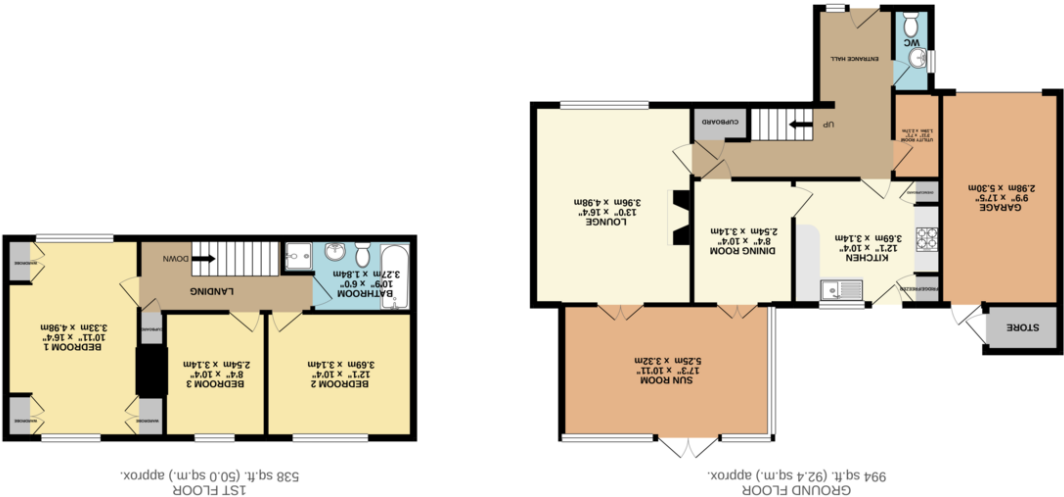




12 Moorlands, Wickersley, Rotherham, S66 1AT



EADON LOCKWOOD & RIDDLE
SALES • LETTINGS • SURVEYS



While every attempt has been made to ensure the accuracy of the floorplan contained herein, measurements of doors, windows, rooms and plot area have been taken and no responsibility is taken for any error, omission or mis-statement. This plan is for illustrative purposes only and should be used as such by any prospective purchaser. The services, fixtures and appliances shown have not been tested and no guarantee as to their operation or efficiency can be given.
Made with Mapbox, v2021

12 Moorlands, Wickersley, S66 1AT

Guide Price £400,000-£410,000

ELR are extremely pleased to be able to offer to the open market this extremely well presented 3 double bedrooom detached family home upon the extremely desirable Moorlands which is situated about half a mile from the abundance of shops, bars & Restaurants in Wickersley. This deceptively spacious property enjoys an extended reception hallway with WC leading off. The living room has a feature fireplace & leads through to arguably the best room in the house, the sun lounge. This spacious room has a pitched & tiled roof making it possible to use all year round. There are French style doors opening onto the rear garden & access to the separate dining room. The kitchen enjoys an array of fitted units with integrated electrical appliances, breakfast bar & double oven. To the 1st floor are 3 double bedrooms, the main with a dual aspect & an abundance of fitted wardrobes, dresser & bedside drawers. A stunning 4 piece bathroom suite in white compliments the property

- An extended 3 bedroom detached house
- Spacious sun lounge overlooking rear garden
- 3 double bedrooms
- Underfloor heating to family bathroom
- Burglar alarm system
- Double driveway & single attached garage
- Ground floor WC
- Utility Room with plumbing for washer
- Lovely mature rear garden with block paved patio
- Internal viewing highly recommended

