

SNELLERS

ESTATE AGENTS



Claremont Road, TW1

£399,999

A well presented, top floor one double bedroom Victorian conversion apartment offering quadruple aspect and enviably located in the heart of St Margarets Village.

Claremont road is centrally located on one of the most sought after residential roads in St Margarets, moments away from the high street, mainline station and Marble Hill Park.

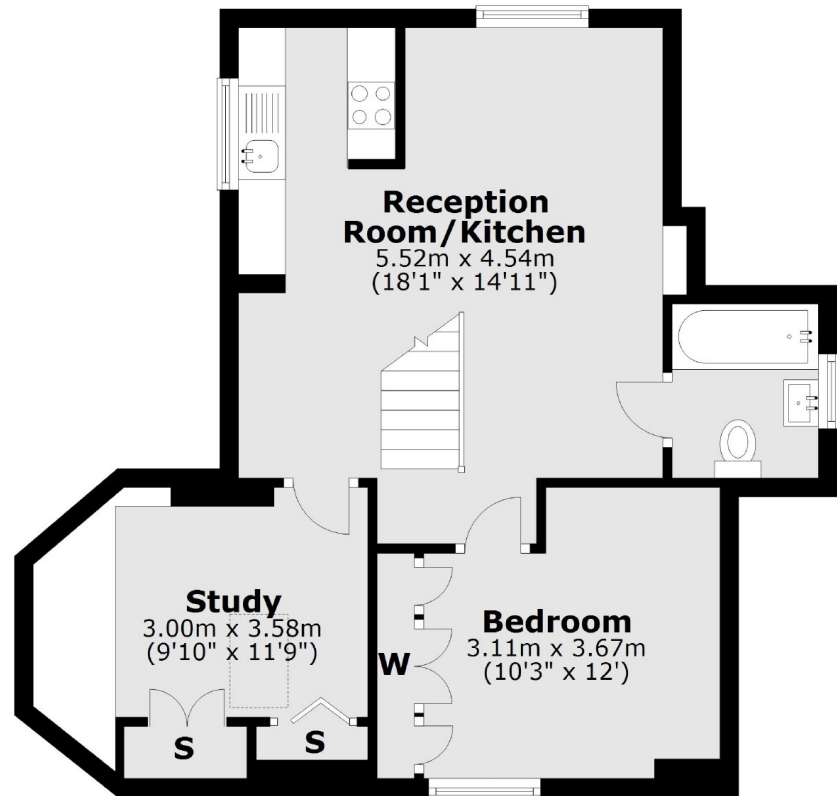
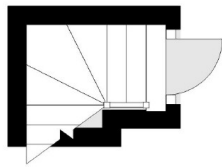
- Victorian Conversion • One Double Bedroom • Study •
- Share of Freehold • Good Condition • Premier Road •

SNELLERS

ESTATE AGENTS

Second Floor

First Floor



Total area: approx. 49.3 sq. metres (530.6 sq. feet)

Snellers St. Margarets Sales
36 Crown Road
St Margarets
TW1 3EH
020 8892 8008
stmargaretssales@snellers.co.uk

Energy Rating: We aim to make our particulars both accurate and reliable. However they are not guaranteed; nor do they form part of an offer or contract. If you require clarification on any points then please contact us, especially if you're traveling some distance to view. Please note that appliances and heating systems have not been tested and therefore no warranties can be given as to their good working order