

FLETCHERS

ESTATE AGENTS



Duke Road, W4

£1,549,950

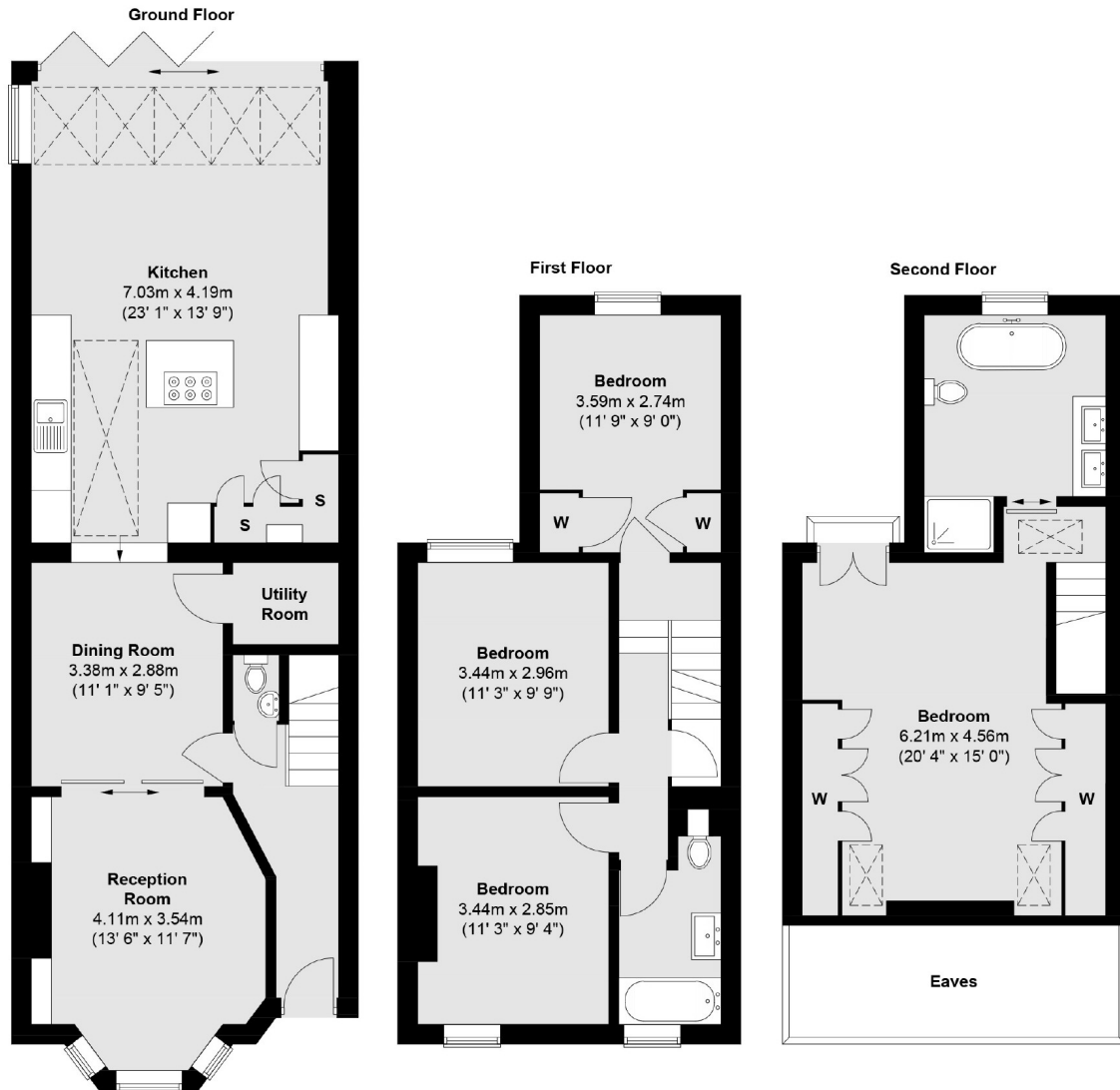
A superb family home in the popular Glebe Estate in Chiswick. This four bedroom home has been meticulously upgraded with bespoke fittings. The fabulous open plan kitchen reception room and top floor master suite both offer a unique wow factor.

Duke Road is a residential street that runs South off Chiswick High Road, with easy access to the fantastic array of shops, cafés and restaurants that Chiswick has to offer. The Riverside is easy reach as well as convenient M4/A4 access.

- Four Double Bedrooms • Two Bathrooms • Double Reception • Remodelled • High Specification • Landscaped Garden •

FLETCHERS

ESTATE AGENTS



Total area (approx.): 150.2 sq. m (1617 sq. ft)

Fletchers Chiswick Turnham Green Sales
58 Turnham Green Terrace, London, W4 1QP
020 8987 3000
chiswicksales@fletcherestates.com

Energy Rating: C. We aim to make our particulars both accurate and reliable. However they are not guaranteed; nor do they form part of an offer or contract. If you require clarification on any points then please contact us, especially if you're traveling some distance to view. Please note that appliances and heating systems have not been tested and therefore no warranties can be given as to their good working order.