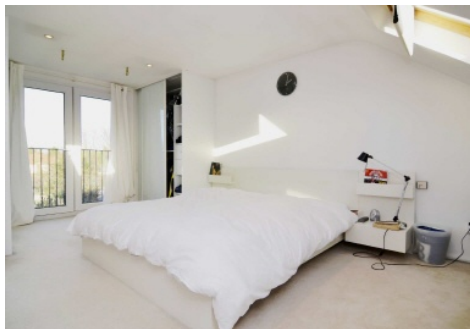


SNELLERS

ESTATE AGENTS



Sixth Cross Road, TW2

£1,060,000

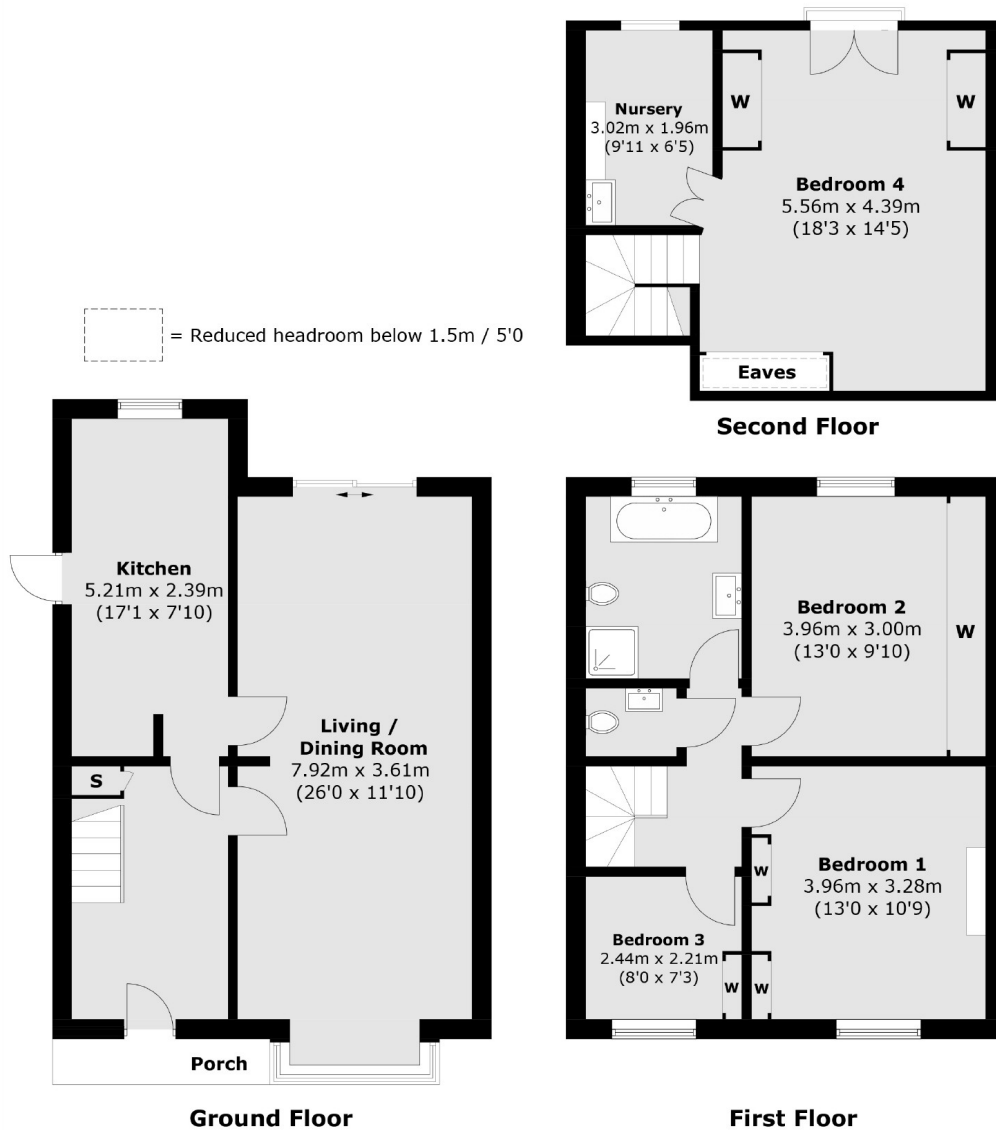
Situated on this highly sought after road, stands this impressive four bedroom family home. Offering no onward chain, off road parking and a lengthy garden, this property is ideal for a family looking for spacious accommodation close to many of the area's most sought after schools.

Sixth Cross Road is situated between Hampton and Staines Road. Twickenham Green is within close proximity and offers great local amenities, whilst Twickenham high street is also close by with its vast array of shops, mainline station, restaurants and bars.

- Four Bedrooms • Off Road Parking • Sought After Location •
- Large Sunny Garden • No Onward Chain • Semi Detached •

SNELLERS

ESTATE AGENTS



Total area (approx.): 135.2 sq. m (1,455.2 sq. ft)
Porch / External Area: 2.6 sq. m (27.9 sq. ft)

Snellers Twickenham Sales
64-66 Heath Road
Twickenham
TW1 4BX
020 8892 5555
twickenhamsales@snellers.co.uk

Energy Rating: E We aim to make our particulars both accurate and reliable. However they are not guaranteed; nor do they form part of an offer or contract. If you require clarification on any points then please contact us, especially if you're traveling some distance to view. Please note that appliances and heating systems have not been tested and therefore no warranties can be given as to their good working order