

TATES

Residential Sales & Lettings



Warren House, Warwick Road, London W14 8TW £475 Per week

- Two double bedrooms
- Available now
- Balcony
- On site gym
- Close to Earls Court and Kensington tube
- Two bathrooms
- Open plan living
- 24 hour porter
- Royal borough of Kensington & Chelsea
- Energy Efficiency Rating Current Band: C

Warren House, W14

Approximate gross internal area

803 sq ft / 74.60 sq m

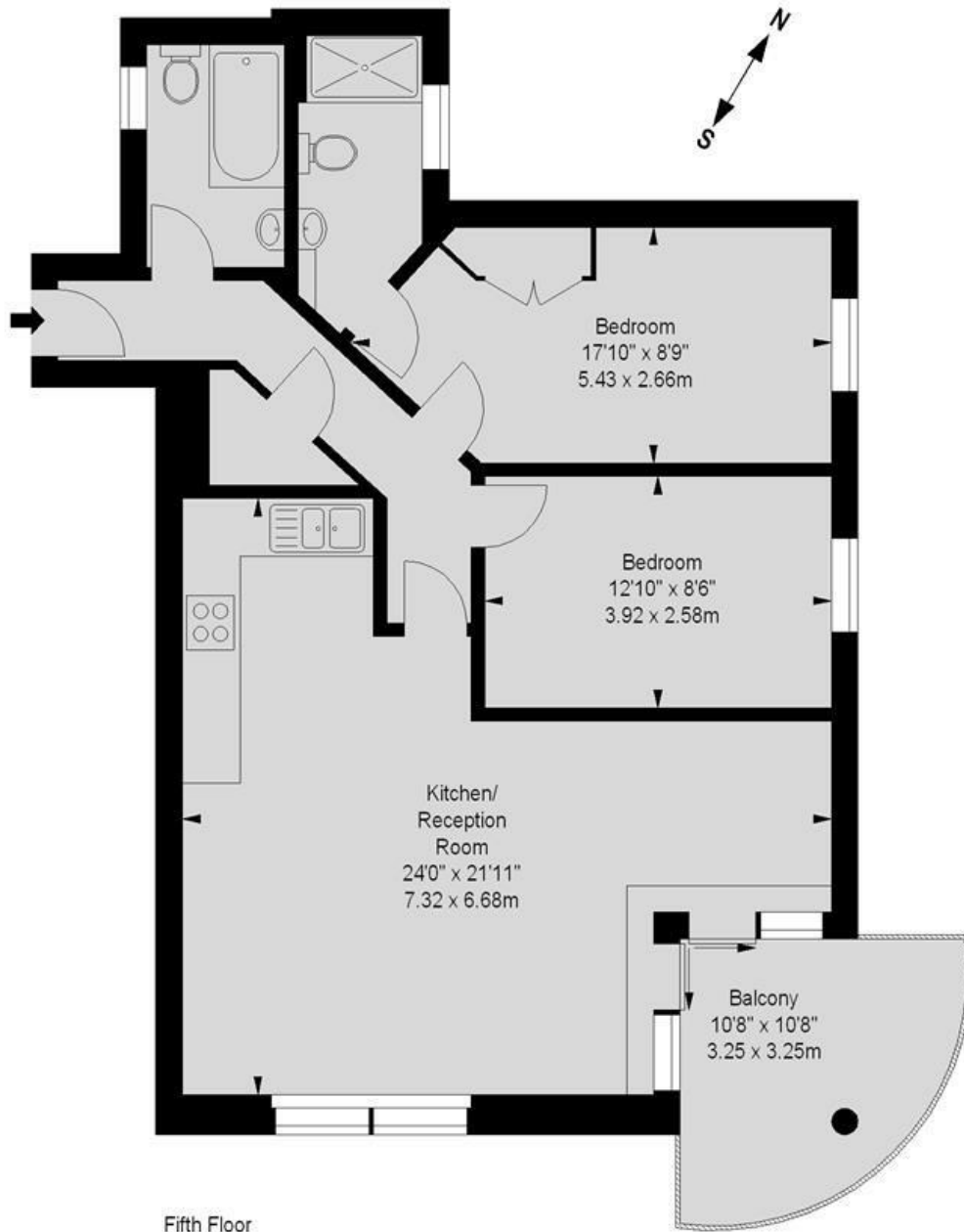


Illustration For Identification Purposes Only. Not To Scale
*Floorplan Drawn According To RICS Guidelines

Whilst these particulars are believed to be correct, no guarantee can be given for the measurements, appliances or services. It is our recommendation that all are tested. These are not intended to form part of any contract. Tate's accept no responsibility for their accuracy.

Energy Efficiency Rating		
	Current	Potential
Very energy efficient - lower running costs		
(92 plus) A		
(81-91) B		
(69-80) C	76	80
(55-68) D		
(39-54) E		
(21-38) F		
(1-20) G		
Not energy efficient - higher running costs		
England & Wales		
EU Directive 2002/91/EC		

135 Hammersmith Rd London W14 0QL

T. 020 7602 6020 F. 020 7602 9522

mail@tatesestates.co.uk

tatesestates.co.uk

Tates (Agents) Ltd. Registered in England and Wales No. 2356337

Registered Office: 4th Floor Imperial House, 15 Kingsway London WC2B 6U

