

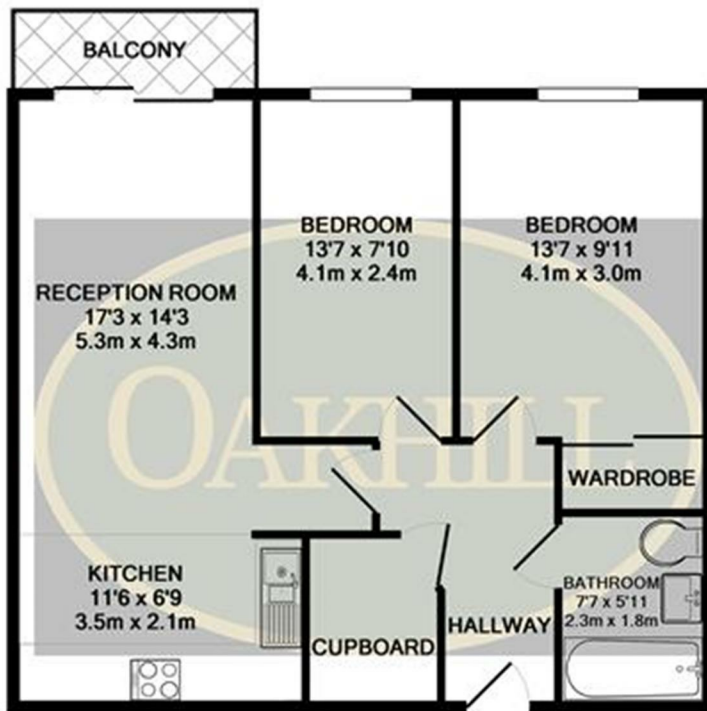


London Road, Isleworth, Middlesex TW7 4AS

Video Viewing Available Spacious and newly repainted two double bedroom apartment. The property offers two double bedrooms, bright and spacious reception room with a fully fitted open plan kitchen and modern bathroom suite. Benefiting from a private balcony, and spacious roof terrace for communal use.

Westgate House is situated on the London Road, which has great transport links only moments away including Isleworth main line station and Hounslow east tube station.

£1,250 PER MONTH

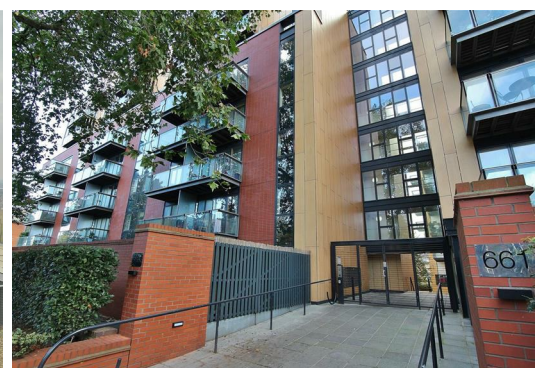
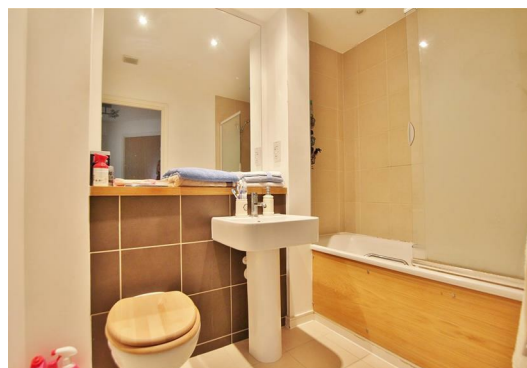


TOTAL APPROX. FLOOR AREA 656 SQ.FT. (60.9 SQ.M.)

Whilst every attempt has been made to ensure the accuracy of the floor plan contained here, measurements of doors, windows, rooms and any other items are approximate and no responsibility is taken for any error, omission, or mis-statement. This plan is for illustrative purposes only and should be used as such by any prospective purchaser. The services, systems and appliances shown have not been tested and no guarantee as to their operability or efficiency can be given
Made with Metropix ©2019

Energy Efficiency Rating		
	Current	Potential
Very energy efficient - lower running costs		
(92 plus) A		
(81-91) B		
(69-80) C		
(55-68) D		
(39-54) E		
(21-38) F		
(1-20) G		
Not energy efficient - higher running costs		
England & Wales	EU Directive 2002/91/EC	

Environmental Impact (CO ₂) Rating		
	Current	Potential
Very environmentally friendly - lower CO ₂ emissions		
(92 plus) A		
(81-91) B		
(69-80) C		
(55-68) D		
(39-54) E		
(21-38) F		
(1-20) G		
Not environmentally friendly - higher CO ₂ emissions		
England & Wales	EU Directive 2002/91/EC	



6 South Street, Isleworth, TW7 7BG
Tel: 0208 568 4433
info@oakhillagents.co.uk
www.oakhillagents.co.uk

OAKHILL