

FLETCHERS

ESTATE AGENTS



Acton Lane, W4

£535,000

Situated in a highly sought after location with direct park views, this charming top floor Victorian conversion offers superb living space (circa 720 sq ft). Benefitting from a spacious eat-in kitchen, separate reception room, plenty of storage and access to a communal garden.



The property has a lovely entrance hall on the way in which leads up to a large fully fitted kitchen/diner with original floorboards and exposed brick wall feature. A small balcony to the rear has garden views and steps down into a large west-facing communal garden.

The property benefits from a family bathroom, plus an additional separate WC for guests.

Upstairs, a separate comfortable reception room features a log burning fireplace. The spacious double bedroom includes built in storage, and a fantastic view over the park. There is also the added benefit of significant loft space for extra storage.

The finish is modern but in keeping with the period character of the building. The house and communal areas are well maintained and each owner has a share of the freehold.

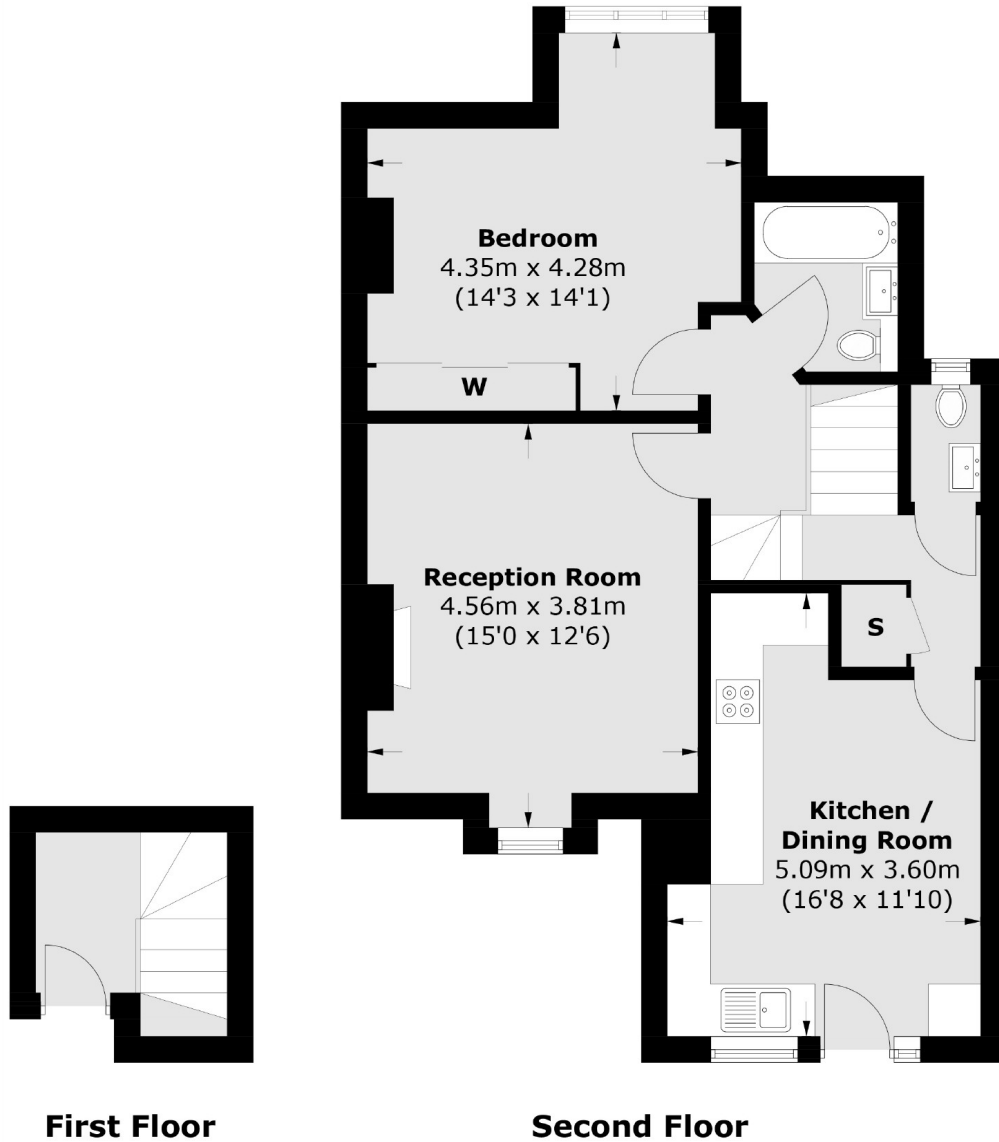
Directly overlooking Acton Green, a very central location within easy reach of the boutique shops, pubs and eateries in Chiswick High Road and Turnham Green. Chiswick Park station is just 150 meters down the road.

- Chain Free • Spacious Living (720 sq ft) • Communal Garden •
- Park Views • Share of Freehold • Close to Amenities •



FLETCHERS

ESTATE AGENTS



Total area (approx.): 66.9 sq. m (720.1 sq. ft)

Fletchers Chiswick Turnham Green Sales
58 Turnham Green Terrace
London
W4 1QP
020 8987 3000
chiswicksales@fletcherestates.com

Energy Rating: We aim to make our particulars both accurate and reliable. However they are not guaranteed; nor do they form part of an offer or contract. If you require clarification on any points then please contact us, especially if you're traveling some distance to view. Please note that appliances and heating systems have not been tested and therefore no warranties can be given as to their good working order