

# FLETCHERS

ESTATE AGENTS



## Silver Crescent, W4

£599,950

This attractive two bedroom first floor conversion offers superb living space with a bright reception room and separate eat-in kitchen, stairs lead down to a good sized private rear garden. There is further potential to extend into the loft (STPP).

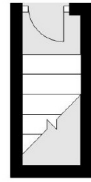
Silver Crescent is within walking distance of the bars, restaurants and independent shops on the popular Chiswick High Road and Turnham Green. Gunnersbury tube station conveniently just at the end of the road.

- Two Bedrooms • First Floor • Separate Kitchen/Diner • Private Garden • Share of Freehold • Potential to Extend (STPP) •

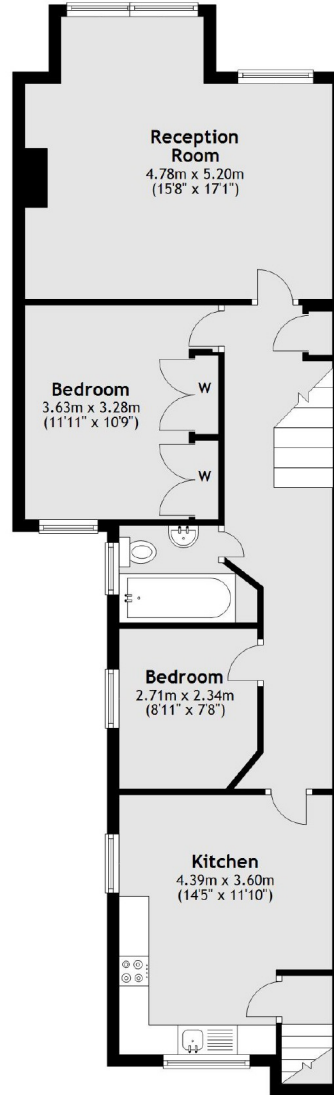
# FLETCHERS

ESTATE AGENTS

Ground Floor



First Floor



Total area: approx. 76.3 sq. metres (821.7 sq. feet)

Fletchers Chiswick Turnham Green Sales  
58 Turnham Green Terrace, London, W4 1QP  
020 8987 3000  
[chiswicksales@fletcherestates.com](mailto:chiswicksales@fletcherestates.com)

Energy Rating: D. We aim to make our particulars both accurate and reliable. However they are not guaranteed; nor do they form part of an offer or contract. If you require clarification on any points then please contact us, especially if you're traveling some distance to view. Please note that appliances and heating systems have not been tested and therefore no warranties can be given as to their good working order.