




Court Way, W3

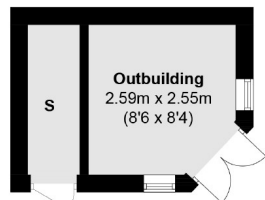
£761 pw (£3300 pcm)

This beautiful four double bedroom family home has been renovated with modern interiors throughout. This end of terrace house would be the envy of your neighbours as it has three floors and three bathrooms.

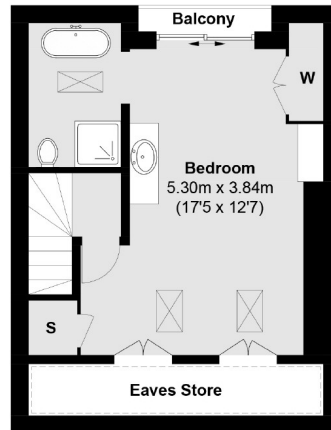
Court Way is around the corner from North Acton Playing Fields and is half a mile from Acton Main Line (Crossrail) station and North Acton (Central line) station.

- Four Bedrooms • Juliet Balcony • Off Street Parking •
- Private Garden • Three Bathrooms • North Acton Playing Fields •

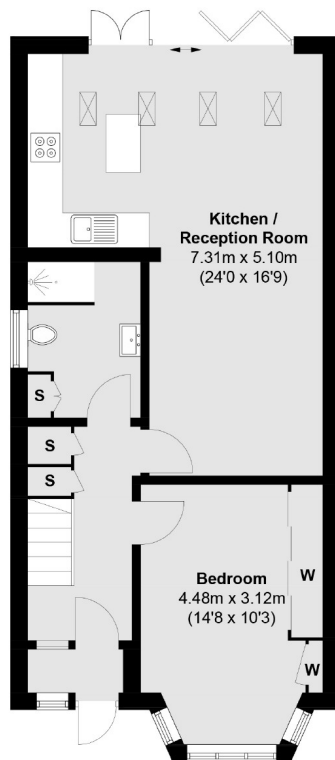
 = Reduced headroom below 1.5m / 5'0



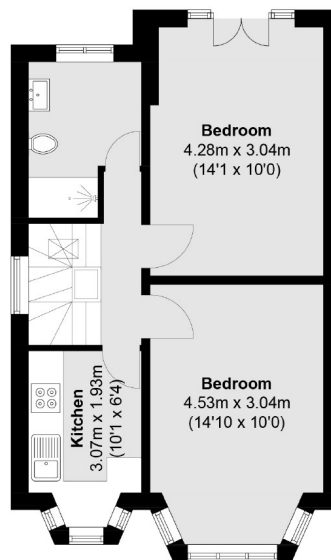
Ground Floor



Second Floor



Ground Floor



First Floor

Total area (approx.): 129.6 sq. m (1,394.9 sq. ft)
 Outbuilding area (approx.): 6.4 sq. m (68.9 sq. ft)
 Store area (approx.): 2.5 sq. m (26.9 sq. ft)
 Balcony area (approx.): 0.9 sq. m (9.6 sq. ft)

Robertson Smith & Kempson Acton Lettings
 137 High Street, Acton, London,
 W3 6LY
 020 8896 3967
actonlettings@robertsonsmithandkempson.co.uk

Energy Rating: D. We aim to make our particulars both accurate and reliable. However they are not guaranteed; nor do they form part of an offer or contract. If you require clarification on any points then please contact us, especially if you're traveling some distance to view. Please note that appliances and heating systems have not been tested and therefore no warranties can be given as to their good working order.