



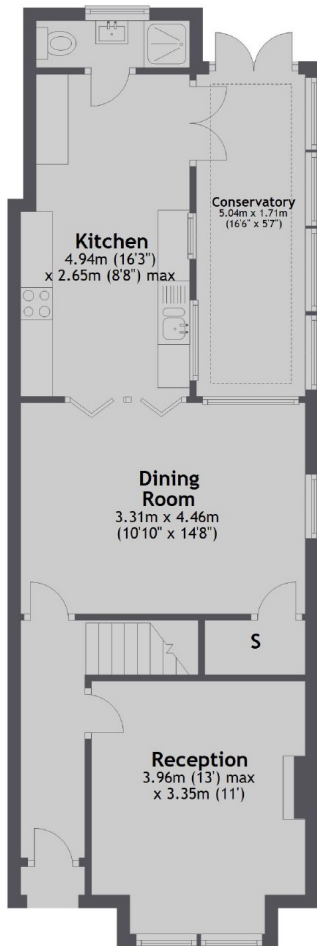
Windermere Road, W5

£553 pw (£2,400 pcm)

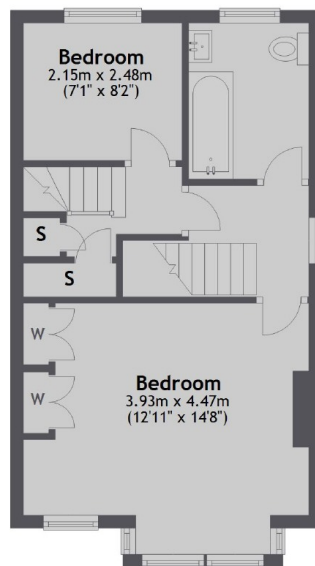
This spacious house in a great location has a front reception room, dining room, beautiful kitchen, a sunny conservatory and shower room with W/C on the ground floor. Upstairs are two bedrooms, a family bathroom and the loft has been converted to create a large bedroom.

Windermere Road is convenient for South Ealing and Northfields tube stations. Close by to both Lammas and Walpole parks.

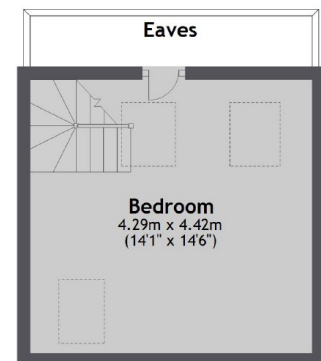
Ground Floor



First Floor



Second Floor



Total area: approx. 114.7 sq. metres (1234.6 sq. feet)

Robertson Smith & Kempson Northfields Lettings
116 Northfield Avenue, London,
W13 9RT
020 8280 2800
northfieldslettings@robertsonsmithandkempson.co.uk

Energy Rating: E. We aim to make our particulars both accurate and reliable. However they are not guaranteed; nor do they form part of an offer or contract. If you require clarification on any points then please contact us, especially if you're traveling some distance to view. Please note that appliances and heating systems have not been tested and therefore no warranties can be given as to their good working order.