



Barn Owl Road
Chippenham, SN14 6XL

STRAKERS

14 Barn Owl Road, Chippenham, Wiltshire, SN14 6XL

A four bedroom, two reception room, detached house situated on the popular Cepen Park North development. The property benefits from a refitted kitchen/breakfast room, conservatory, two en suites, landscaped garden and a garage.

- Modern Detached House
- Four Bedrooms, Two Receptions
- Kitchen/Breakfast Room With Recently Refitted Units
- Two En-Suite Shower Rooms & A Bathroom
- Two Reception Rooms
- Conservatory
- Good Sized, Landscaped Garden
- Garage & Driveway Parking

Asking Price £425,000



Pleasantly situated in a quiet cul de sac on the popular Cepen Park North development is this well proportioned, detached family home.

The property offers an excellent level of accommodation over two floors comprising; entrance porch, hall with cloakroom off, sitting room with wood burning stove, dining room opening onto the rear garden, kitchen/breakfast room with recently fitted units and granite worktops, good sized conservatory, four double bedrooms (two with en-suite shower rooms) and a bathroom with white suite.

Externally there is a generous garden which has been landscaped and comprises of a level lawn, paved patio and large timber decked seating areas. The garden is well enclosed by recently replaced fencing.

Single garage with electric up and over door and driveway parking for two cars,

Situation

The highly sought after development of Cepen Park North offers excellent motor commuting to the major centres of Bath, Bristol, Swindon and London via the A4, A420 and the M4. Two of the town's highly reputable senior schools are within easy access together with a Morrisons supermarket. A more comprehensive range of amenities are to be found in the nearby town centre including mainline railway (London-Paddington), college and sports facilities.

Property Information

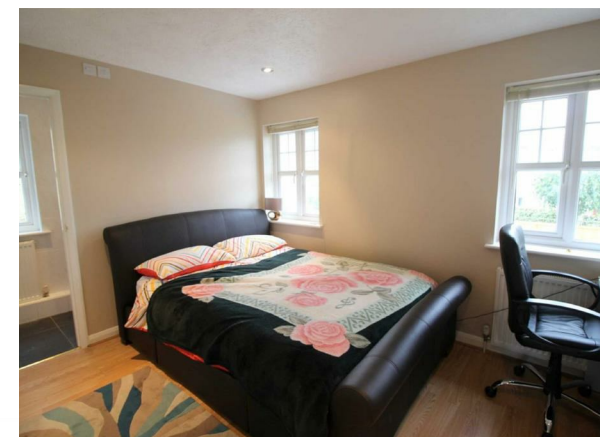
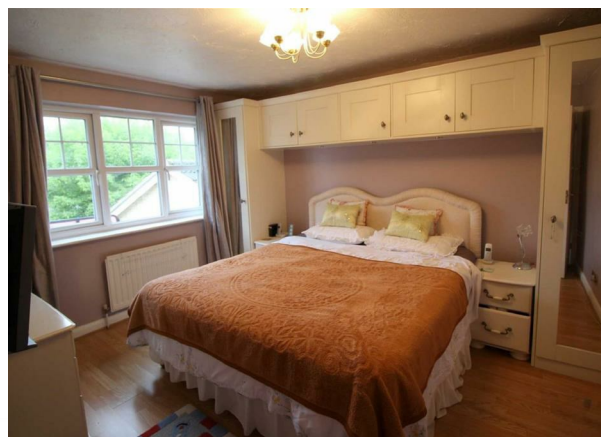
Council Tax Band; E

Freehold

Mains Services

Gas Fired Central Heating

EPC Rating; D



www.strakers.co.uk

Email: chippenham@strakers.co.uk

Tel: 01249 652717

14 Barn Owl Road, Chippenham, Wiltshire, SN14 6XL

Illustration for identification purposes only, measurements are approximate, not to scale.
Plan produced using PlanUp.

