

# SNELLERS

ESTATE AGENTS



## Riverview Gardens, TW1

£1,350,000

This five bedroom double fronted family home is just under 2500 sq ft and just over 500ft to the River Thames.

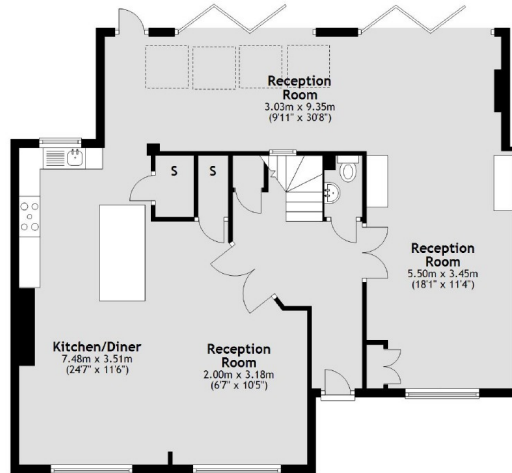
Riverview Gardens is less than 500ft to Radnor Gardens and the River Thames. It is also 0.2 miles to St Catherines School, just over half a mile to Sir Richard Reynolds College and less than a mile to Orleans Park School and Twickenham Station.

- 0.2m to St Catherines School • 0.9m to Station • Five Bedrooms •
- Three Bathrooms • Driveway • Nearly 2500 sf ft •

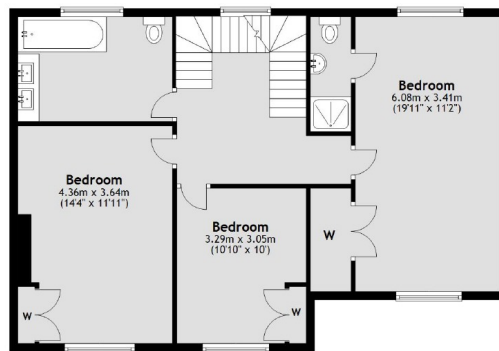
# SNELLERS

ESTATE AGENTS

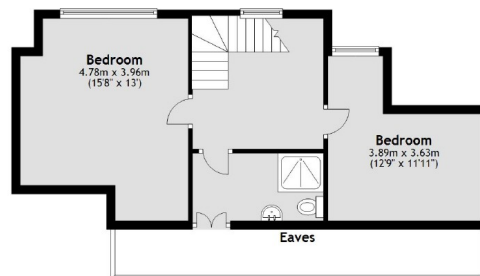
Ground Floor



First Floor



Second Floor



Total area: approx. 230.5 sq. metres (2481.1 sq. feet)

Snellers Twickenham Sales  
64-66 Heath Road  
Twickenham  
TW1 4BX  
020 8892 5555  
twickenhamsales@snellers.co.uk

Energy Rating: D We aim to make our particulars both accurate and reliable. However they are not guaranteed; nor do they form part of an offer or contract. If you require clarification on any points then please contact us, especially if you're traveling some distance to view. Please note that appliances and heating systems have not been tested and therefore no warranties can be given as to their good working order