



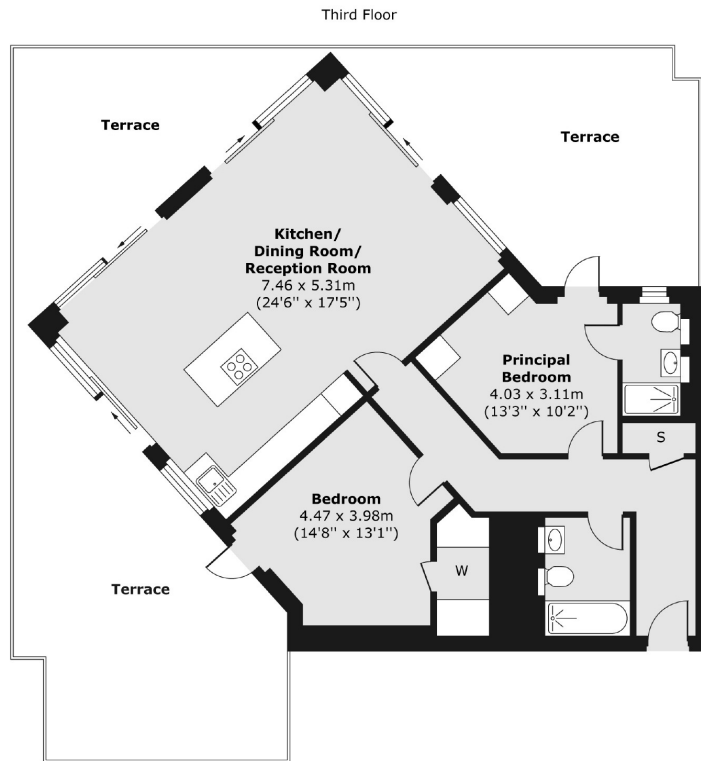
## Pilgrimage Street, SE1

£999,999

OIEO £1,060,000. An exceptional apartment with incredible natural light, refurbished to a very high standard, with three terraces, a large open plan kitchen, dining room and living room, plus two double bedrooms and two bathrooms.

Atollo is enviably located on a quiet resident road in central SE1, running just off Long Lane, within 0.3 miles of London Bridge Station and the Shard, along with Borough Market, Bermondsey Street and the South Bank

- OIEO £1,060,000 • Three Terraces • Fabulous Natural Light •
- Two Double Bedrooms - Two Bathrooms • High Spec Finish • Lift Access & Secure Entry •



Total area (approx.) 89.34 sq. m (962 sq. ft)

Terrace area (approx.) 74.11 sq. m (798 sq. ft)

Energy Rating: . We aim to make our particulars both accurate and reliable. However they are not guaranteed; nor do they form part of an offer or contract. If you require clarification on any points then please contact us, especially if you're traveling some distance to view. Please note that appliances and heating systems have not been tested and therefore no warranties can be given as to their good working order.