

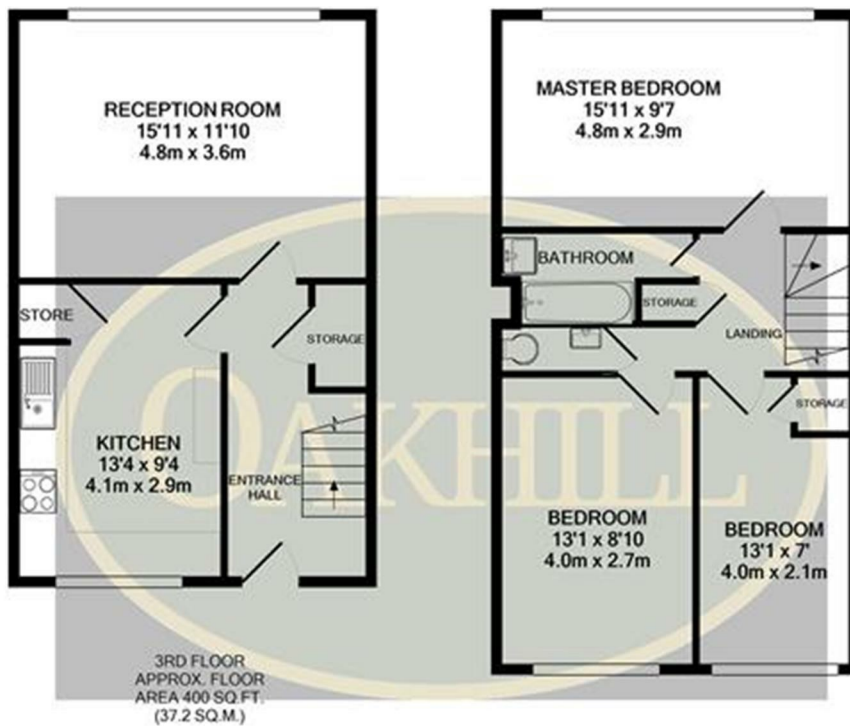


Summerwood Road, Isleworth, Middlesex TW7 7QH

****360 SHOWCASE TOUR AVAILABLE ON REQUEST**** Spacious three bedroom split-level apartment presented in fantastic condition throughout. The property offers three good sized bedrooms, a large reception/dining room, modern and fully fitted kitchen with breakfast bar, a family bathroom with separate WC and plenty of internal storage. The property also benefits from gas central heating and double glazed windows. Residents permit parking is also available along with a secure external private store providing perfect space for bike storage or other items.

The property is situated on a quiet, residential road within easy reach of Twickenham station, as well as local amenities and bus links taking you into Twickenham and Isleworth.

£1,400 PER MONTH



4TH FLOOR
APPROX. FLOOR AREA 460 SQ.FT. (42.7 SQ.M.)

TOTAL APPROX. FLOOR AREA 860 SQ.FT. (79.9 SQ.M.)

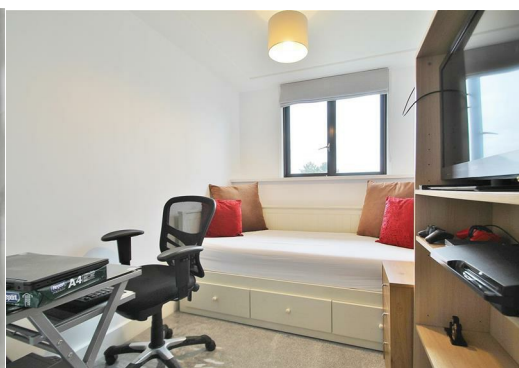
Whilst every attempt has been made to ensure the accuracy of the floor plan contained here, measurements of doors, windows, rooms and any other items are approximate and no responsibility is taken for any error, omission, or mis-statement. This plan is for illustrative purposes only and should be used as such by any prospective purchaser. The services, systems and appliances shown have not been tested and no guarantee as to their operability or efficiency can be given
Made with Metropix ©2021

Energy Efficiency Rating

	Current	Potential
Very energy efficient - lower running costs		
(92 plus) A		
(81-91) B		
(69-80) C		
(55-68) D		
(39-54) E		
(21-38) F		
(1-20) G		
Not energy efficient - higher running costs		
England & Wales	EU Directive 2002/91/EC	

Environmental Impact (CO₂) Rating

	Current	Potential
Very environmentally friendly - lower CO ₂ emissions		
(92 plus) A		
(81-91) B		
(69-80) C		
(55-68) D		
(39-54) E		
(21-38) F		
(1-20) G		
Not environmentally friendly - higher CO ₂ emissions		
England & Wales	EU Directive 2002/91/EC	



6 South Street, Isleworth, TW7 7BG
Tel: 0208 568 4433
info@oakhillagents.co.uk
www.oakhillagents.co.uk

OAKHILL