

TATES

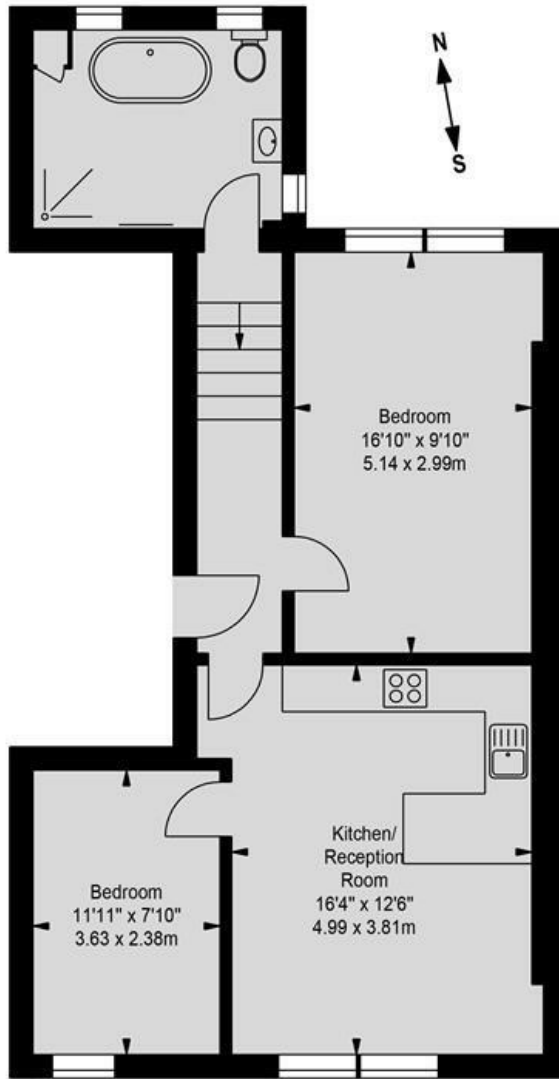
Residential Sales & Lettings



Edith Road, West Kensington W14 0TJ £435 Per week

- Two double bedrooms
- Spacious bathroom with separate bath and shower
- Open plan living room and kitchen
- Second floor
- Newly refurbished
- Unfurnished
- Close to Barons Court and West Kensington tube stations
- Energy Efficiency Rating Current Band: C

Edith Road, W14
 Approximate gross internal area
 654 sq ft / 60.76 sq m



Second Floor

The floor plan is not to scale and measurements and areas shown are approximate and therefore should be used for illustrative purposes only. The plan has been prepared in accordance with the RICS code of Measuring Practice and whilst we have confidence in the information produced, it must not be relied on. If there is any aspect of particular importance, you should carry out or commission your own inspection of the property. Copyright of FeaturePRO.

Energy Efficiency Rating		
	Current	Potential
Very energy efficient - lower running costs		
(92 plus) A		
(81-91) B		
(69-80) C	72	76
(55-68) D		
(39-54) E		
(21-38) F		
(1-20) G		
Not energy efficient - higher running costs		
England & Wales		
	EU Directive 2002/91/EC	

Whilst these particulars are believed to be correct, no guarantee can be given for the measurements, appliances or services. It is our recommendation that all are tested. These are not intended to form part of any contract. Tates accept no responsibility for their accuracy.

135 Hammersmith Rd London W14 0QL.
 T. 020 7602 6020 F. 020 7602 9522
 mail@tatesestates.co.uk
 tatesestates.co.uk

Tates (Agents) Ltd. Registered in England and Wales No. 2356337
 Registered Office: 4th Floor Imperial House, 15 Kingsway London WC2B 6U

