



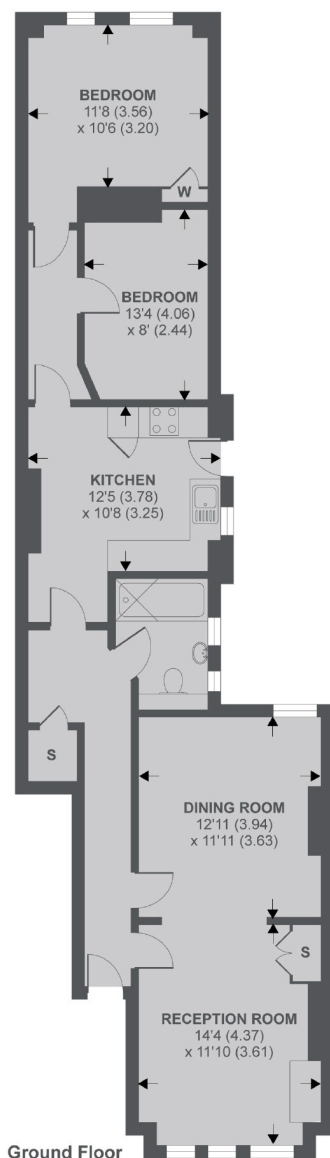
## Weir Road, SW12

**£2,300 PCM**

A two bedroom ground floor conversion flat with a private garden. This property is suitable for a professional couple.

- Two Bedroom Flat
- Reception Room
- Modern Fitted Kitchen
- Private Garden
- Close To Balham Station
- Part Furnished

For further information on the costs associated with renting a property, please pop into our office or visit our website.



### Weir Road, SW12

APPROX. GROSS INTERNAL FLOOR AREA 934 SQ FT 86.8 SQ METRES

Copyright nichecom.co.uk 2018 REF : 402245

Jacksons Balham  
8-11 Balham Station Road  
London  
SW12 9SG  
020 8675 6565  
balham.lettings@jacksonsestateagents.com

Energy Rating: TBC We aim to make our particulars both accurate and reliable. However they are not guaranteed; nor do they form part of an offer or contract. If you require clarification on any points then please contact us, especially if you're traveling some distance to view. Please note that appliances and heating systems have not been tested and therefore no warranties can be given as to their good working order.