

FLETCHERS

ESTATE AGENTS



Palladian Gardens, W4

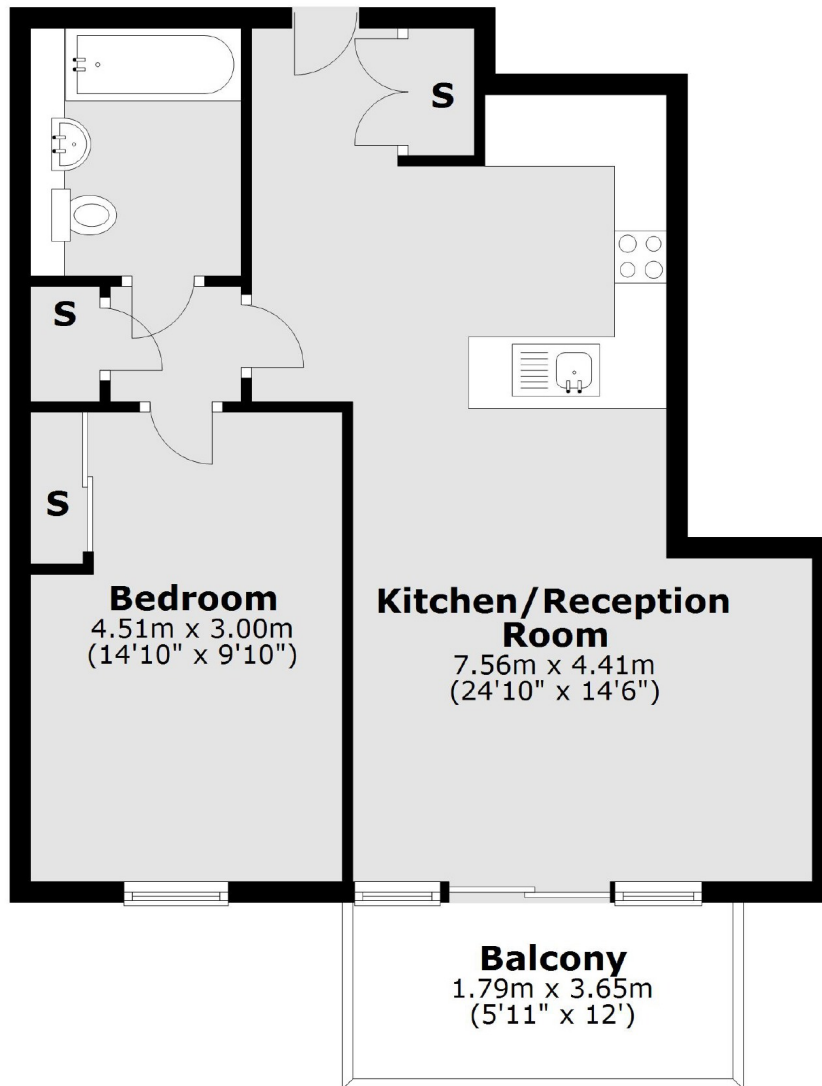
£550,000

This luxury one bedroom apartment is in a secure gated development with on-site concierge, gym facilities and underground parking. Finished to an impressive standard and with plenty of entertaining space including a south-facing terrace.

Only a short walk away from the River Thames and Chiswick House and Grounds. Chiswick High Road is nearby with a fantastic selection of amenities as well as Turnham Green Terrace Station.

- One Bedroom • Communal Gardens • Underground Parking • Private Terrace • Gym Facilities • Concierge •

First Floor



Main area: Approx. 53.3 sq. metres (573.5 sq. feet)
Plus balconies, approx. 6.5 sq. metres (70.5 sq. feet)

Fletchers Chiswick Turnham Green Sales
58 Turnham Green Terrace, London, W4 1QP
020 8987 3000
chiswicksales@fletcherestates.com

Energy Rating: B. We aim to make our particulars both accurate and reliable. However they are not guaranteed; nor do they form part of an offer or contract. If you require clarification on any points then please contact us, especially if you're traveling some distance to view. Please note that appliances and heating systems have not been tested and therefore no warranties can be given as to their good working order.