

Chard

— Lettings —



Fulham Palace Road, SW6

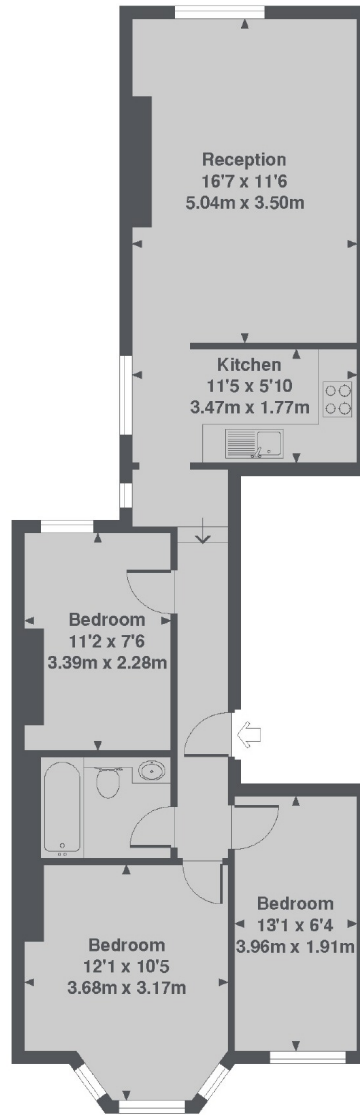
£514 pw (£2,300 pcm)

This spacious three bedroom, first floor flat on Fulham Palace Road is ideally located close to all local amenities and offers excellent transport links. This property has a semi open-plan living room with a modern integrated kitchen and a modern tiled bathroom.

Putney Bridge tube station is close by in addition to many bus routes into the city, Putney and Hammersmith. There is a selection of local amenities, restaurants and cafés on Fulham Road and Fulham high street. Bishops Park is also moments away from the property.

Chard

Lettings



Fulham Palace Road, SW6
Total Approx. Floor area 649 Sq. Ft. (60.3 Sq. M.)

Chard Fulham
5 Harwood Road,
London, SW6 4QP
020 7384 1400
fulhamlettings@chard.co.uk

Energy Rating: D. We aim to make our particulars both accurate and reliable. However they are not guaranteed; nor do they form part of an offer or contract. If you require clarification on any points then please contact us, especially if you're traveling some distance to view. Please note that appliances and heating systems have not been tested and therefore no warranties can be given as to their good working order.