

# TATES

Residential Sales & Lettings



## Oxford Gate, Brook Green, London W6 7DA £1,200 Per week

- Modern Family house
- Three bathrooms
- Brook Green
- Unfurnished
- Available end of January
- Four bedrooms
- Gated development
- Off street parking
- Close to Hammersmith & Barons Court tube stations
- Energy Efficiency Rating Current Band: C

Oxford Gate, W6  
 Approximate gross internal area  
 1,760 sq ft / 163.5 sq m

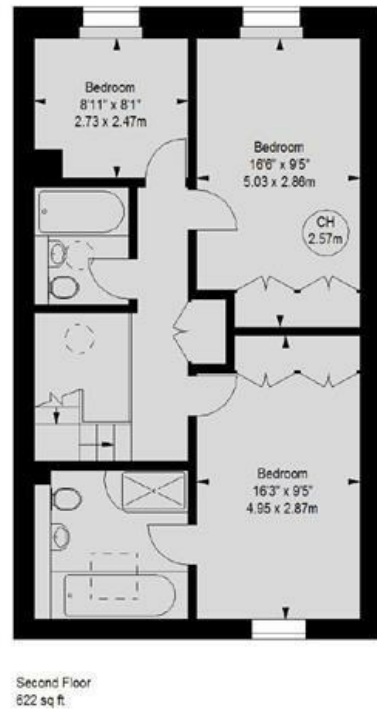
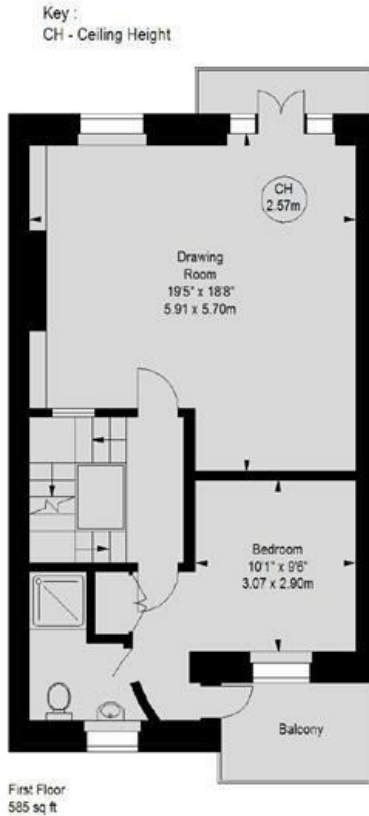
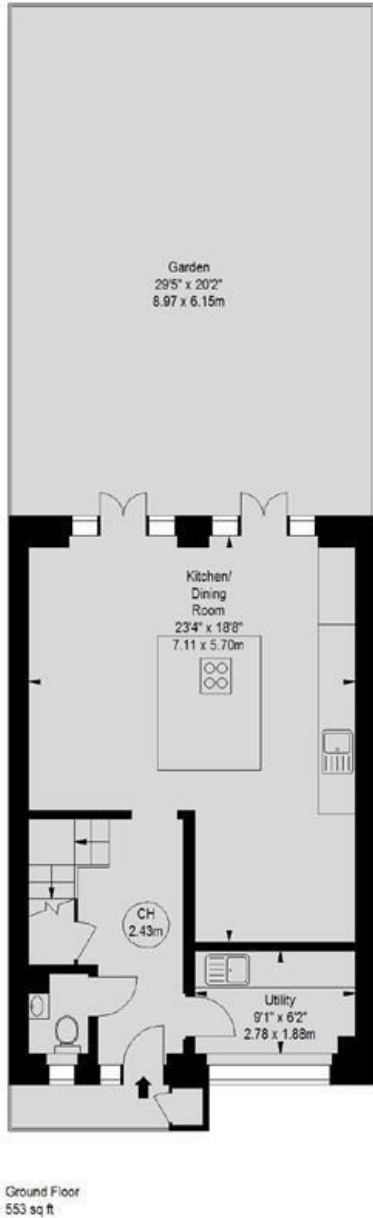


Illustration For Identification Purposes Only. Not To Scale  
 \*Floorplan Drawn According To RICS Guidelines

Whilst these particulars are believed to be correct, no guarantee can be given for the measurements, appliances or services. It is our recommendation that all are tested. These are not intended to form part of any contract. Rates accept no responsibility for their accuracy.

Energy Efficiency Rating		Current	Potential
Very energy efficient - lower running costs			
(92 plus) A			86
(81-91) B		76	
(69-80) C			
(55-68) D			
(39-54) E			
(21-38) F			
(1-20) G			
Not energy efficient - higher running costs			
England & Wales		EU Directive 2002/91/EC	

135 Hammersmith Rd London W14 0QL.  
 T. 020 7602 6020 F. 020 7602 9522  
 mail@tatesestates.co.uk  
 tatesestates.co.uk

Tates (Agents) Ltd. Registered in England and Wales No. 2356337  
 Registered Office: 4th Floor Imperial House, 15 Kingsway London WC2B 6U

