



Thorgills

MARKET LEADING AGENCY

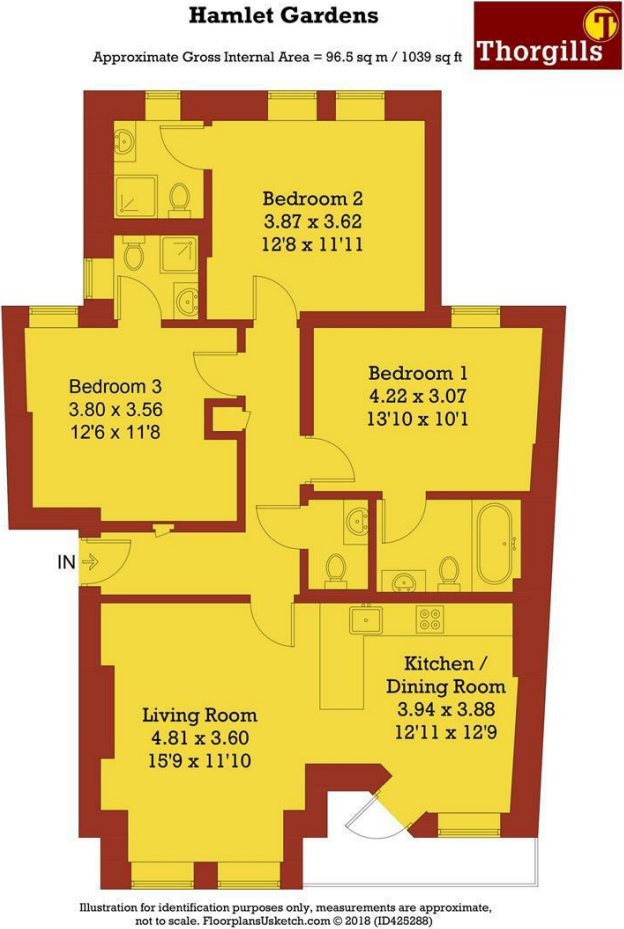
Hamlet Gardens, London, W6 0TR

£4,767 PCM



Thorgills 

Floor Plan



These particulars, whilst believed to be accurate are set out as a general outline only for guidance and do not constitute any part of an offer or contract. Intending purchasers should not rely on them as statements of representation of fact, but must satisfy themselves by inspection or otherwise as to their accuracy. No person in this firm's employment has the authority to make or give any representation or warranty in respect of the property.

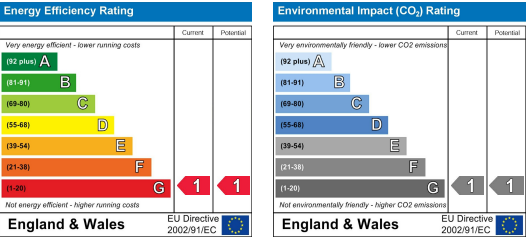
Accommodation

- Brand New Property
- Stylish Modern Apartment
- Three Bathrooms
- Fully Fitted Kitchen
- Open Plan Reception Room
- Residents' Parking
- Wooden Floors
- Separate WC
- Entryphone System
- Central Location

Viewing

Please contact our Brentford branch on 020 8994 9886 if you wish to arrange a viewing appointment for this property or require further information.

Energy Efficiency Graph



SALES & LETTINGS
020 8994 9886

CLIENT SUPPORT
020 8560 9555

PROPERTY MANAGEMENT
020 8994 9945

ACCOUNTS
020 8758 2888

