

Frank Harris & Co.



Defoe House, EC2Y

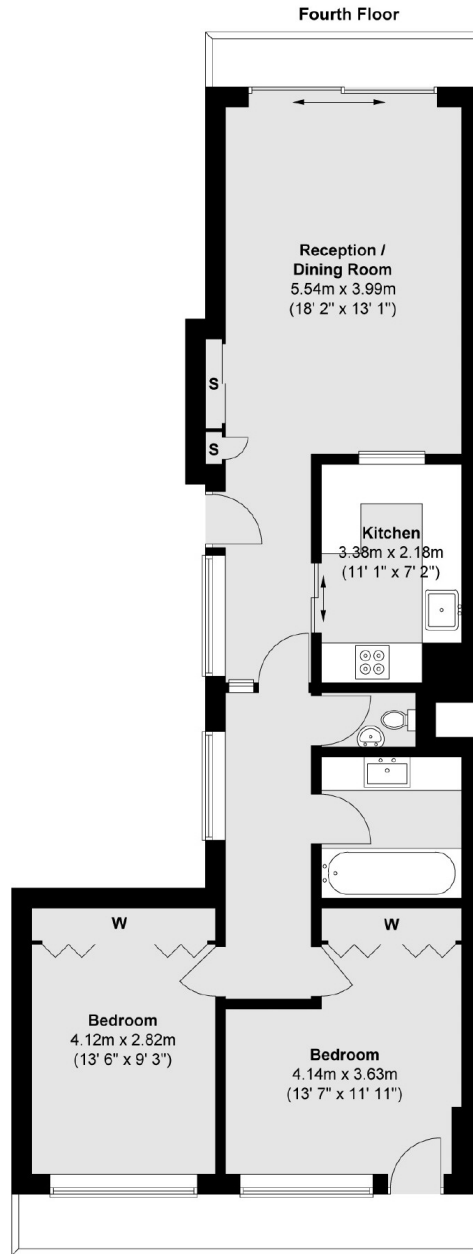
£800,000

This South-facing two bedroom apartment on the fourth floor overlooks peaceful residents gardens and retains the original Barbican bathroom.

Transport links include Barbican, St. Paul's, Moorgate, Farringdon, and Crossrail stations. City shopping facilities include Cheapside and Moorgate.

- Type 21 • Updated Kitchen • Overlooking Gardens •
- South Facing Balcony • Extended Lease • No Onward Chain •

Frank Harris & Co.



Total area (approx.): 72.4 sq. m (779 sq. ft)
Total balcony / fire exit area (approx.): 8.4 sq. m (90 sq. ft)

Frank Harris & Co. Barbican and City
87 Long Lane, London,
EC1A 9ET
020 7600 7000
city@frankharris.co.uk

Energy Rating: TBC. We aim to make our particulars both accurate and reliable. However they are not guaranteed; nor do they form part of an offer or contract. If you require clarification on any points then please contact us, especially if you're traveling some distance to view. Please note that appliances and heating systems have not been tested and therefore no warranties can be given as to their good working order.