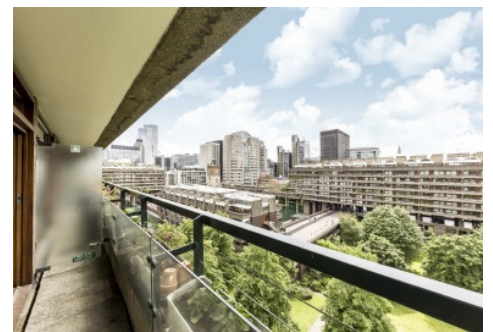


Frank Harris & Co.



Defoe House, EC2Y

£900,000

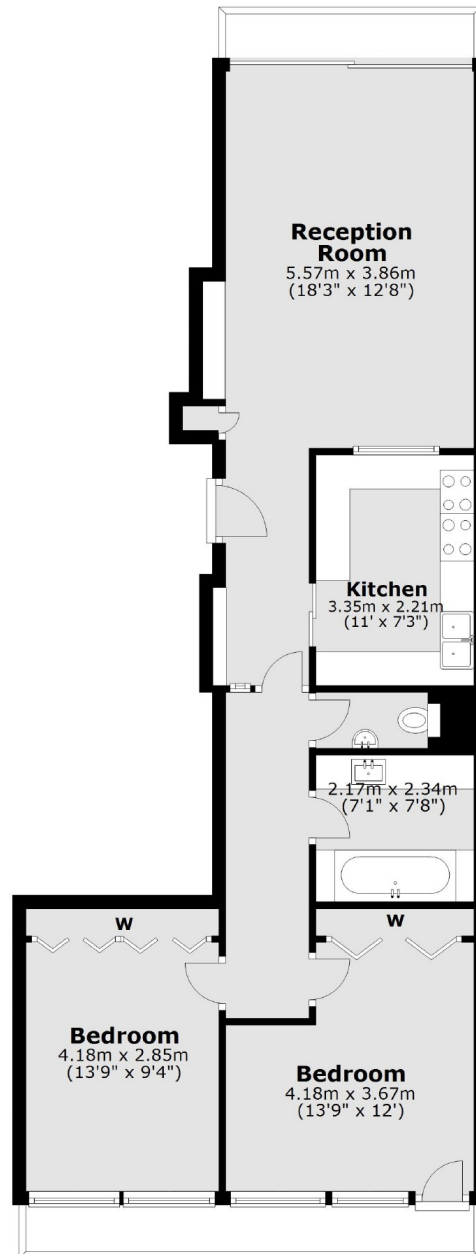
A sixth floor two bedroom flat with many sought after original features, and wooden flooring throughout. This property is situated on the 6th floor, has lovely south facing views onto the Barbican lake and gardens. This flat has kept original fittings in both the kitchen and bathroom.

Defoe House is close to both the Barbican tube station and the new Farringdon station which will operate the Crossrail line.

- Type 21 • Brooke Marine Kitchen • Wooden Floors Throughout •
- Views Of St. Pauls • Communal Gardens • Close To Barbican Station •

Frank Harris & Co.

Sixth Floor



Main area: Approx. 74.2 sq. metres (798.8 sq. feet)

Frank Harris & Co. Barbican and City
87 Long Lane, London,
EC1A 9ET
020 7600 7000
city@frankharris.co.uk

Energy Rating: TBC. We aim to make our particulars both accurate and reliable. However they are not guaranteed; nor do they form part of an offer or contract. If you require clarification on any points then please contact us, especially if you're traveling some distance to view. Please note that appliances and heating systems have not been tested and therefore no warranties can be given as to their good working order.

