



Elysian Fields 21 Colquitt Street, Liverpool , Merseyside L1 4DL
Asking price £189,950

bluerow
SALES | LETTINGS | INVESTMENTS

If Location is your main priority then Bluerow Homes may have the place for you. We are pleased to bring to the market an outstanding two bedroom apartment within this much sought after development, Elysian Fields, Located in the heart of Liverpool city centre, L1 region. Within close proximity to local bars, restaurants and shops.

This generously sized apartment briefly comprises; a communal entrance with 24 hour concierge, entrance hall, open plan living/dining area with modern fitted kitchen and balcony, two double bedrooms, en-suite shower room to master bedroom and family bathroom. With the benefit of a secure car, underground parking space.

Viewings are highly recommended for this apartment being sold with No onward Chain.

Figures to be verified:

950 year lease from 2004

Service Charge £1550 per annum

Ground rent £150 per annum

EWS1 form provided by Vendor

Communal Entrance

Concierge desk. Post box collection. Stylish entrance with slate walls, porcelain tiled floor and chandeliers. Stairs and lifts to all floors.

Apartment Entrance and Hallway

Storage cupboard. Wood flooring. Doors to all rooms.

Living/Dining Area

Open plan space consisting of Wood flooring, video entryphone system, electric radiator. Floor to ceiling, wall to wall double glazed windows and door opening on to balcony with views of the courtyard and Anglican Cathedral.

Kitchen Area

Fitted kitchen comprising; Wall, base and drawer Units and Corian work tops. Built in oven, hob, extractor, fridge, freezer, space for washing machine and dishwasher. Down Lighters and tiled floor and partially tiles walls.

Master Bedroom

Double glazed window with door allowing access to balcony. Electric wall mounted heater. Carpet Flooring. Door to en-suite shower room

En-suite Shower Room

White Suite comprising; Step in shower compartment with shower, wash hand basin, low level w.c.. Heated towel rail. Wall mounted mirror. Shaver point. Tiled walls and floor

Bedroom Two

Carpet Flooring. Wall Mounted electric heater. Double window.

Bathroom

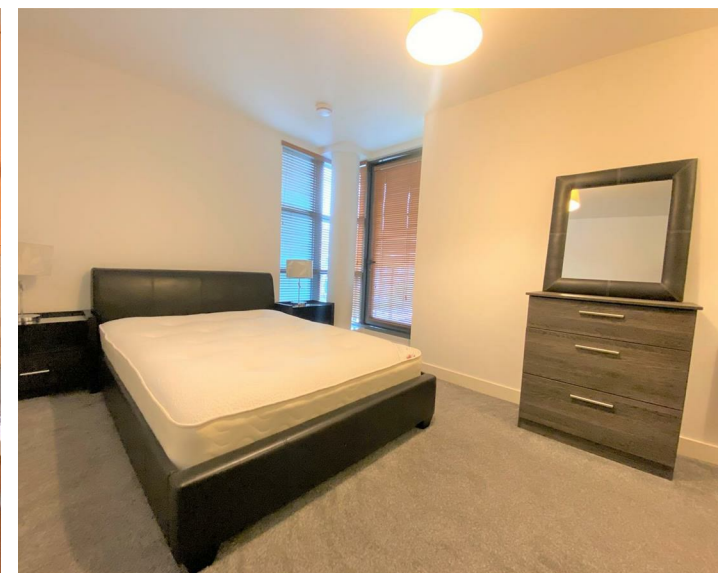
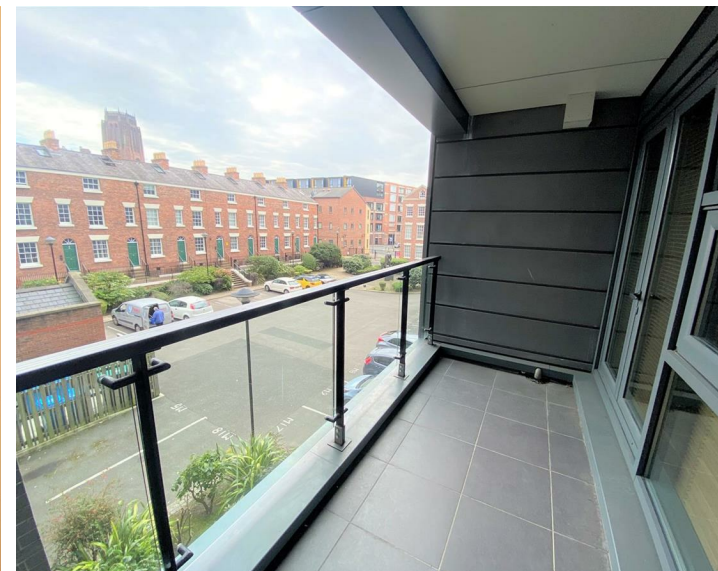
White suite comprising; panel bath with shower over. Wash hand basin. Low Level w.c. Vanity Cupboard. Tiled walls and floor

Balcony

Accessible from lounge and master bedroom, Generous size overlooking the courtyard with views of the Anglican Cathedral

Parking

Allocated parking space for one location in the under ground car park, accessed via electric fob entry gates, benefiting from CCTV.



116 Duke Street, Liverpool, Merseyside, L1 5JW

Tel: 0151 709 9638

sales@bluerowhomes.co.uk

www.bluerowlettings.com

bluerow
SALES | LETTINGS | INVESTMENTS