



Park Road, KT1

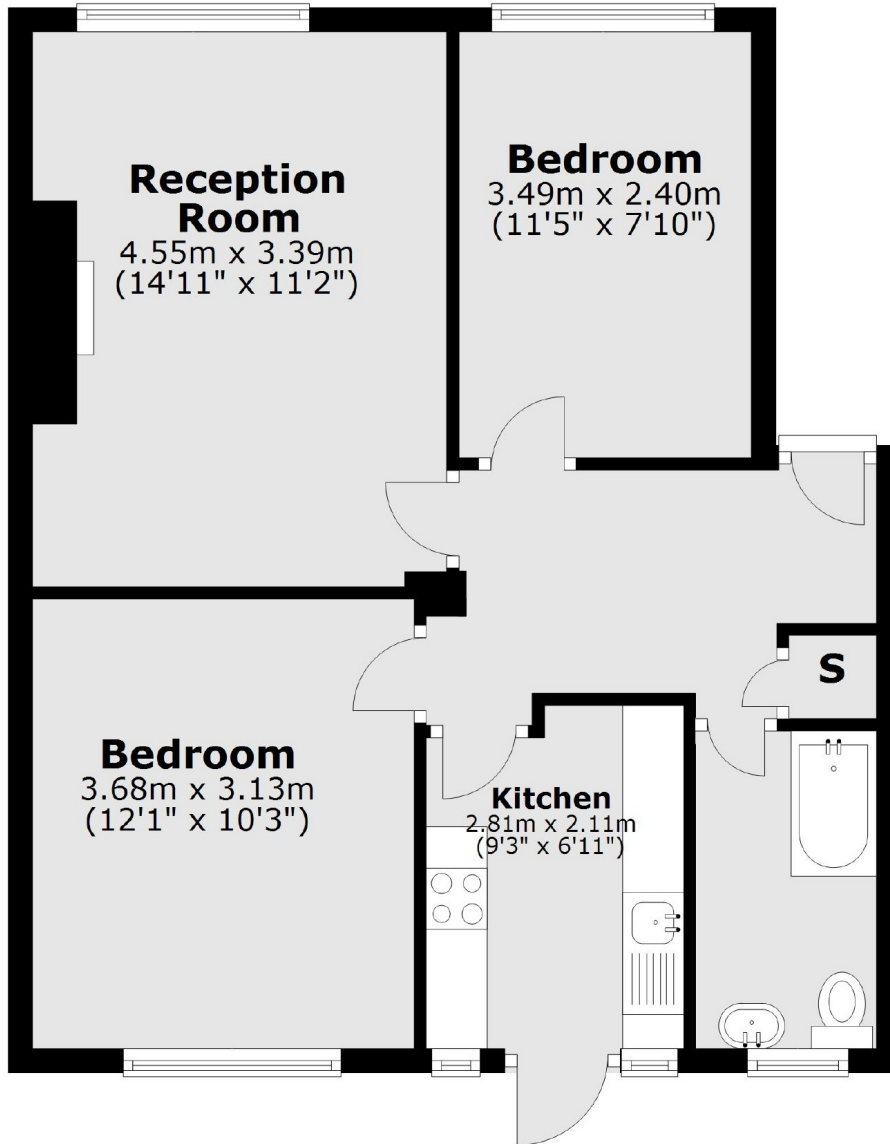
£1,325 PCM

This ground floor two double bedroom apartment within this Art Deco build opposite Bushy Park has a spacious living room and direct access onto communal gardens.

Park Court is set within leafy communal gardens directly opposite Bushy Park, moments from Hampton Wick station and only 0.5 miles from Kingston town centre.

- Opposite Bushy Park • Two Bedrooms • Ground Floor •
- Residents Parking • Separate Kitchen • Gas Central Heating •

Ground Floor



Total area: approx. 53.9 sq. metres (580.4 sq. feet)

Snellers Teddington Lettings
74 Broad Street
Teddington
TW11 8QX
020 8614 6140
teddingtonlettings@snellers.co.uk

Energy Rating: D We aim to make our particulars both accurate and reliable. However they are not guaranteed; nor do they form part of an offer or contract. If you require clarification on any points then please contact us, especially if you're traveling some distance to view. Please note that appliances and heating systems have not been tested and therefore no warranties can be given as to their good working order