



Dumbarton Road, SW2

£1,000,000

** Guide Price £1,000,000 - £1,100,000 ** An exceedingly wide late Edwardian family house which has incredibly spacious accommodation on both floors yet has scope to be further extended. NO ONWARD CHAIN.

- Freehold House
- Versatile Accommodation
- Four/Five Bedrooms
- NO ONWARD CHAIN
- Two/Three Receptions
- Parking Potential

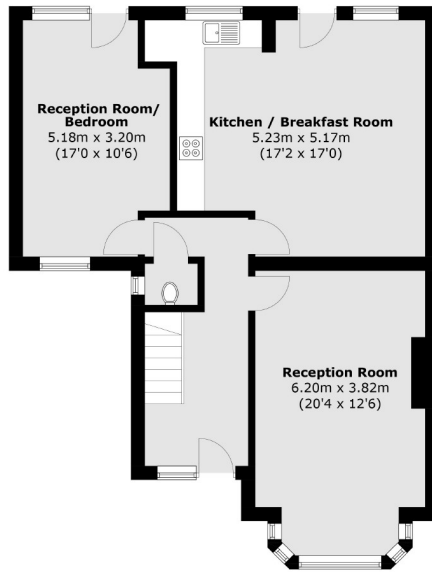
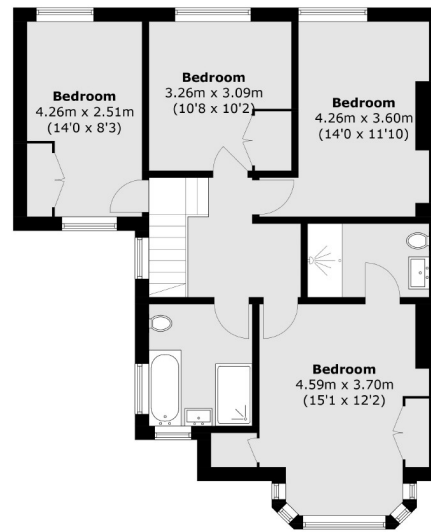


Measuring 1,624 square feet, the property has potential to be extended on the ground floor at the side and to the rear as well into the large loft space (STPP). The already spacious home has been stylishly finished to a high standard, offering versatile accommodation and is offered with no onward chain. The ground floor is incredibly light and wider than many and comprises two/three reception rooms in addition to a well fitted kitchen, ground floor W.C./Cloakroom and wide entrance hall. The first floor comprises four double bedrooms served by a large family bathroom and a further en-suite shower room to the master bedroom. The garden enjoys lots of direct sunlight throughout the day. To the front there is an area which could be developed as an off-street parking space once the kerb is dropped.

Dumbarton Road is one of the most conveniently placed residential roads just off Brixton Hill making it super convenient to Brixton town centre, with its Victoria Line tube station plus overground station. In addition numerous bars and restaurants are close by as is the famous Ritzy cinema. Finally Clapham and Abbeville





**Ground Floor****First Floor**

Total area (approx.): 150.9 sq. m (1,624.2 sq. ft)

Jacksons Tooting
26 Tooting Bec Road
London
SW17 8BD
020 8767 0522
tooting.sales@jacksonsestateagents.com

Energy Rating: D We aim to make our particulars both accurate and reliable. However they are not guaranteed; nor do they form part of an offer or contract. If you require clarification on any points then please contact us, especially if you're traveling some distance to view. Please note that appliances and heating systems have not been tested and therefore no warranties can be given as to their good working order.